



## 3A Waratah Street Melton South VIC

2 1 1

This bright and contemporary brick veneer residence is located in one of the most convenient pockets of Melton South, and within close proximity to all amazing amenities this area has to offer, including being only moments away from Melton Train Station, Station Square Shopping Centre, all levels of schooling, child care, parks, bus stops and much more.

This modern unit comprises of two bedrooms that are decent size and with lots of natural light flowing throughout the spaces, both serviced by a stunning central bathroom

The well-appointed kitchen creates a stunning heart of the home with ample storage and bench space, stainless steel appliances and a beautiful neutral colour scheme. This overlooks the open plan meals and living area which leads to the outside where you'll be greeted by a low

**Price** : \$369,000 - \$399,000

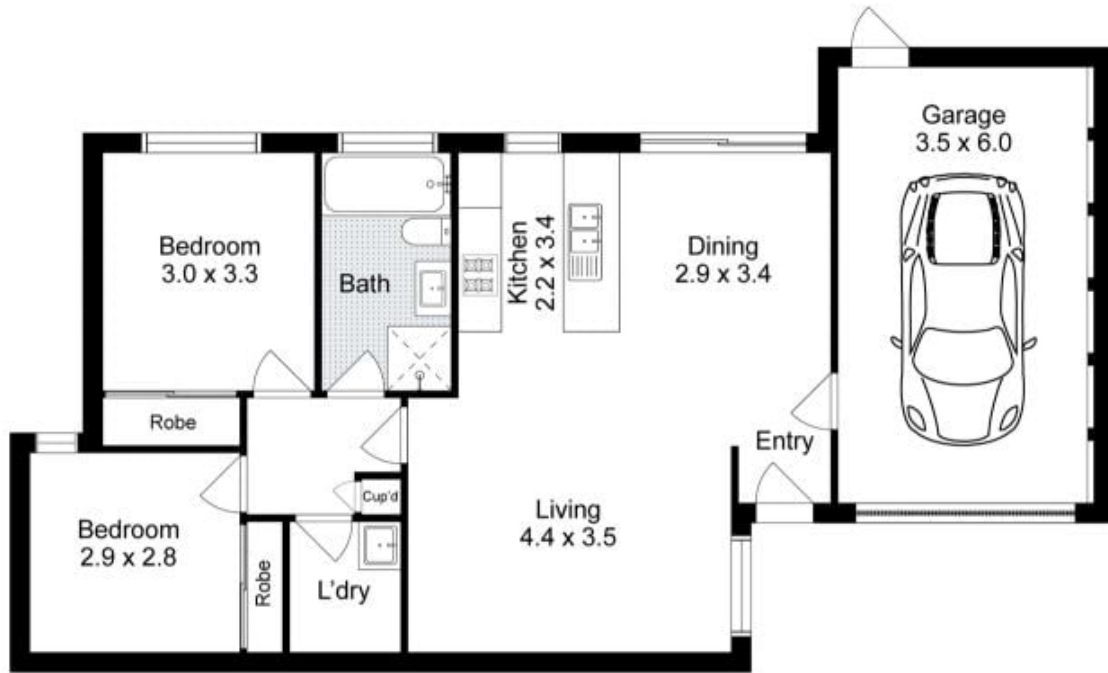
**View** : <https://www.ypa.com.au/8120967>



**Mark Edwards**  
0422 017 068



**Shane Spiteri**  
0488 980 115



### 3a Waratah Street, Melton South

ypa

Whilst every attempt has been made to ensure the accuracy of the floor plan contained here, measurements of doors, windows, rooms and any other items are approximate and no responsibility is taken for any error, omission, or mis-statement. This plan is for illustrative purposes only and should be used as such by any prospective purchaser. The services, systems and appliances shown have not been tested and no guarantee as to their operability or efficiency can be given.

