



## 60 Fleetwood Circuit MELTON WEST VIC

4 2 2

Upon entering this beautiful family home, you will be greeted the ample space on offer and the warm and inviting feeling. Situated on a massive 829m<sup>2</sup> allotment (approx.) in Westlake, one of Melton Wests most sought after areas, within close proximity to Woodgrove Shopping Centre and zoned schools, this property offers not only a comfortable living environment, but a great neighbourhood and space for the whole family to enjoy.

Upon entry you are greeted by a large living area and dining space, perfect to host the whole family. The large kitchen is complete with stone benchtop, feature city scape splash back, ample storage and upgraded appliances. This overlooks the additional living area.

The spacious master bedrooms sits at the front of the home and is accompanied by a neat ensuite and walk in

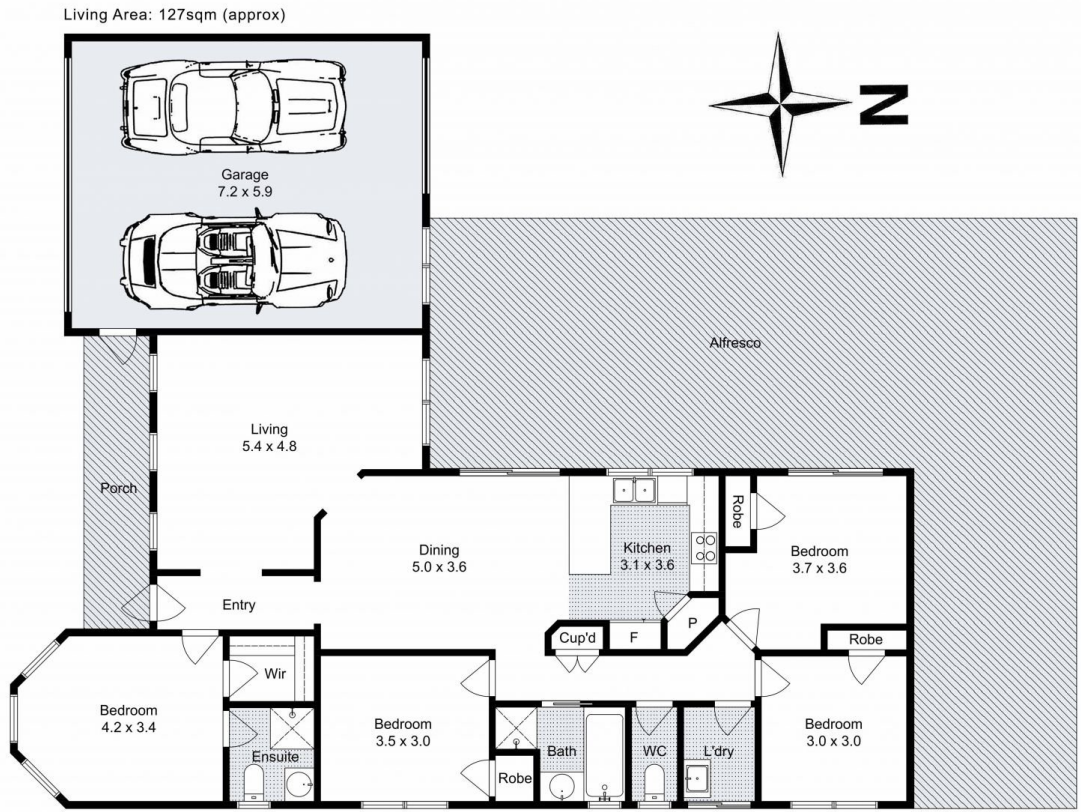
**Price** : \$599,000 - \$659,000  
**Land Size** : 829 sqm  
**View** : <https://www.ypa.com.au/8121914>



**Kate McGlone**  
0401 853 244



**Tahlia Hall**  
0422 419 589



## 60 Fleetwood Circuit, Melton West

Whilst every attempt has been made to ensure the accuracy of the floor plan contained here, measurements of doors, windows, rooms and any other items are approximate and no responsibility is taken for any error, omission, or mis-statement. This plan is for illustrative purposes only and should be used as such by any prospective purchaser. The services, systems and appliances shown have not been tested and no guarantee as to their operability or efficiency can be given.