



36 Marble Drive Cobblebank VIC

3 2 1

Situated in the highly desirable estate of Cobblebank, this modern home not only offers convenience, comfort and top-class amenities, but also a beautiful, well-built home to match. Close by to Strathtulloh Primary School, Cobblebank Train Station, Cobblebank Athletics Track, Cobblebank Village and the future Melton Hospital this great home is perfect for anyone who appreciates quality living and a promising location.

Price : \$519,000 - \$559,000

View : <https://www.ypa.com.au/8121967>

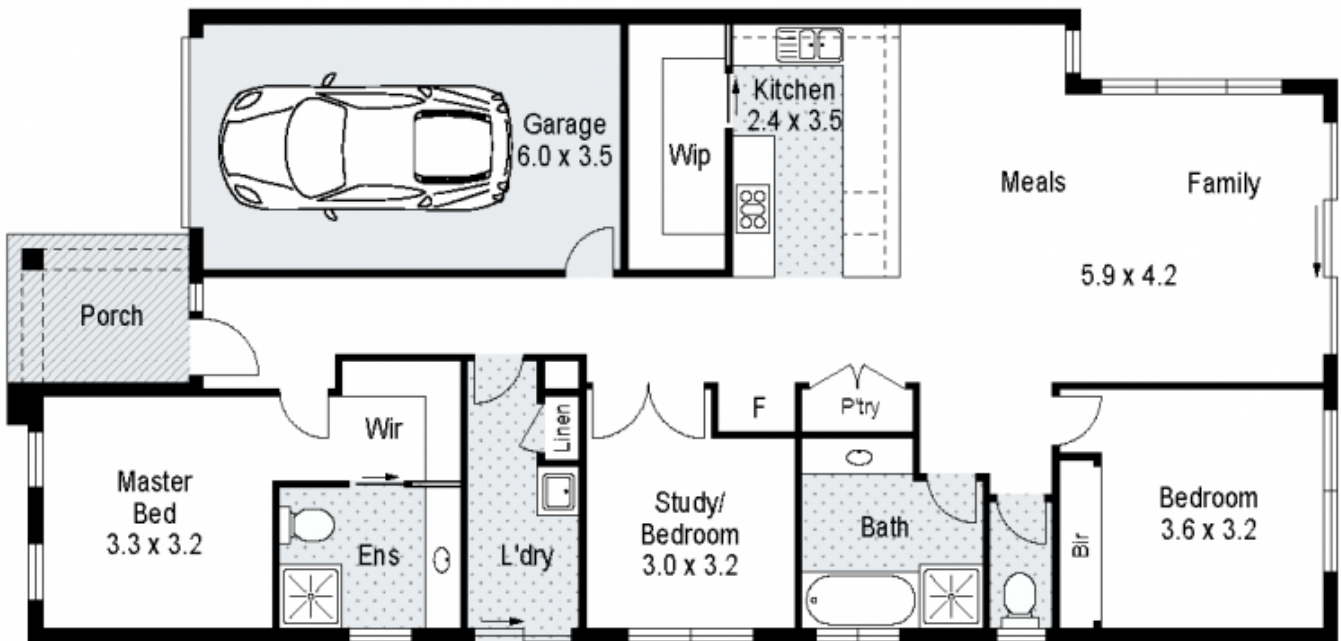
As soon as you enter, you are taken back by the immaculate care the lovely home-owner has given to this space. It just feels like home. You are greeted by a bright ambiance, and airy feel from the neutral colour palette, and modern finishes. At the front of this great floorplan, you are met with the master bedroom complete featuring a spacious walk in robe and bright ensuite, the remaining two bedrooms are both good in size and are serviced by a



Shane Spiteri
0488 980 115



Junior MuBashar
0450 644 606



36 Marble Drive, Melton South

Whilst every attempt has been made to ensure the accuracy of the floor plan contained here, measurements of doors, windows, rooms and any other items are approximate and no responsibility is taken for any error, omission, or mis-statement. This plan is for illustrative purposes only and should be used as such by any prospective purchaser. The services, systems and appliances shown have not been tested and no guarantee as to their operability or efficiency can be given.