



3 Gramercy Place Strathtulloh VIC

4 2 2

This quality brand new build is positioned in an amazing location in the heart of Strathtulloh with close proximity to Cobble Train Station, the newly opened schools including St Francis Catholic School & Strathtulloh Primary School and more, Cobblebank Village Shopping centre, upcoming Hospital, parklands and freeway access. This property is the perfect opportunity for all buyers!

Price : \$699,000 - \$749,000

View : <https://www.ypa.com.au/8122054>

Walking through the front door you are met with nine-foot ceilings, floorboards that flow throughout the home and a neutral colour scheme that sets a welcoming tone. The master bedroom is positioned at the front of the house and is large in size while also featuring a stunning ensuite with porcelain floor to ceiling tiles, stone benchtops, double vanity and larger shower. The remaining three bedrooms this fantastic home has to offer are all located at the rear of the home and are all generous in size and feature built in



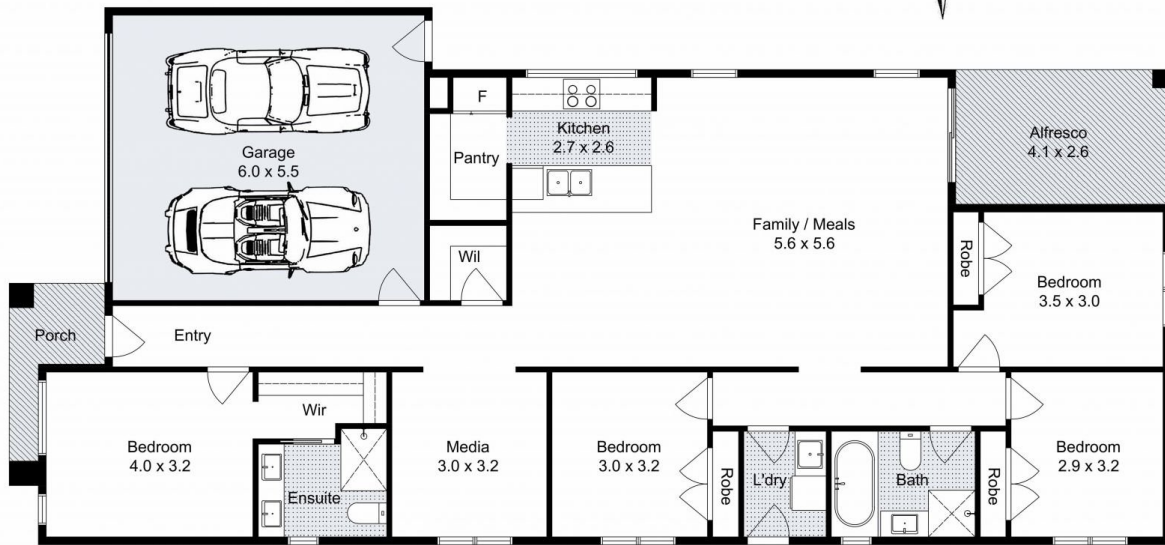
Shane Spiteri
0488 980 115



Ricky Frew
0402 007 100



Living Area: 146sqm (approx)



3 Gramercy Place, Strathulloh

Whilst every attempt has been made to ensure the accuracy of the floor plan contained here, measurements of doors, windows, rooms and any other items are approximate and no responsibility is taken for any error, omission, or mis-statement. This plan is for illustrative purposes only and should be used as such by any prospective purchaser. The services, systems and appliances shown have not been tested and no guarantee as to their operability or efficiency can be given.

