



30 Ruxton Way Hopetoun Park VIC

4 2 8

Introducing 30 Ruxton Way, Hopetoun Park, a masterfully designed property where luxury, space, and modern living harmoniously combine to create a residence of unrivalled sophistication. This expansive four-bedroom home is situated on an impressive 5644m² Approx. corner block, providing both privacy and a sense of grandeur. Every inch of this property has been carefully curated with a focus on comfort, style, and functionality, making it the perfect sanctuary for families and entertainers alike.

As you step inside, you're welcomed by a seamless blend of elegance and practicality. The home offers four distinct living areas, each designed to cater to a variety of lifestyles. The home cinema is every movie buff's dream. The third living space comes with an adjoining study, providing the perfect workspace for professionals or a quiet retreat for students. The sheer versatility of this area

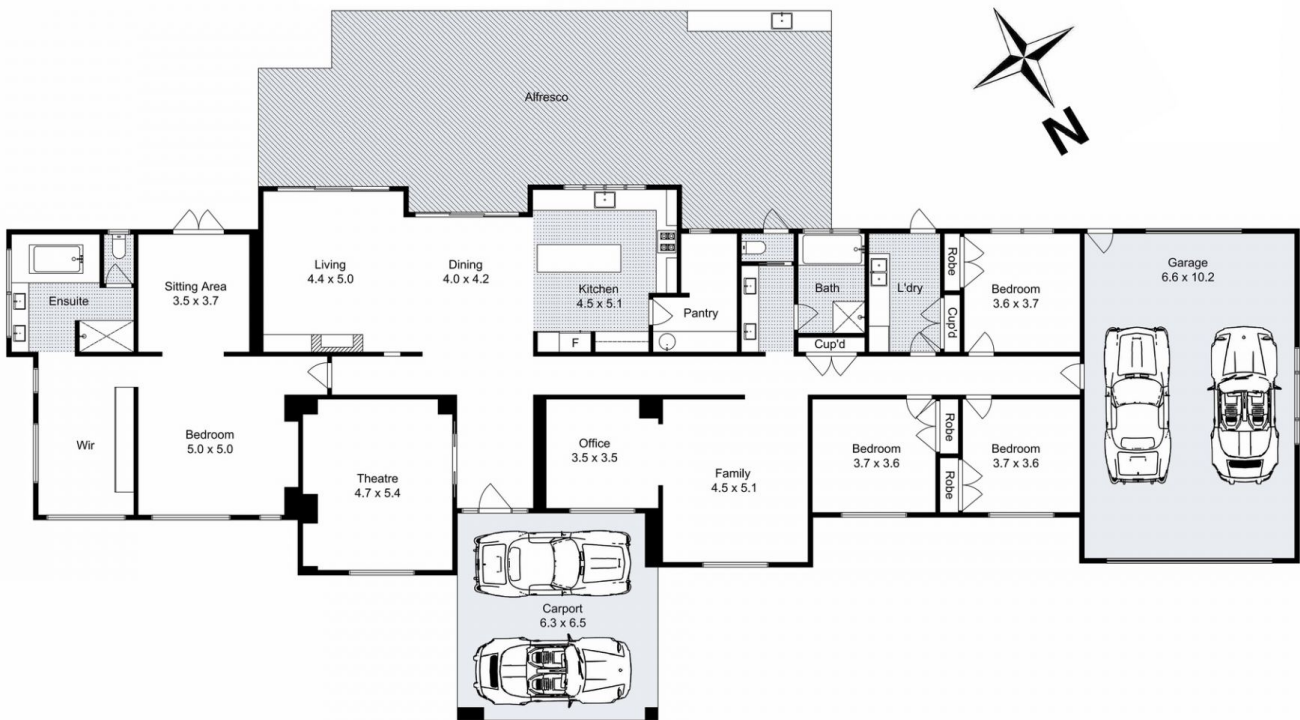
Price : \$ 1,900,000
Building Size : 321 sqm
Land Size : 5644 sqm
View : <https://www.ypa.com.au/8122159>



Shane Spiteri
0488 980 115



Zac Boland
0439 442 286



30 Ruxton Way, Hopetoun Park

Whilst every attempt has been made to ensure the accuracy of the floor plan contained here, measurements of doors, windows, rooms and any other items are approximate and no responsibility is taken for any error, omission, or mis-statement. This plan is for illustrative purposes only and should be used as such by any prospective purchaser. The services, systems and appliances shown have not been tested and no guarantee as to their operability or efficiency can be given.

