



2 Thomas Street MOONEE PONDS VIC

4 1 1

A charming residence offering timeless elegance and modern comfort. Boasting original period features, including high ceilings, ornate cornices, and beautiful bay windows, this spacious family home offers four generously sized bedrooms with ceiling fans and a centrally located bathroom. The well-appointed kitchen, complete with ample cupboard space, opens out to a large meals area and an expansive living room creating the perfect ambience for entertaining. Step outside to a big backyard featuring a pergola, ideal for outdoor dining and relaxation, a convenient lock-up garage and more.

Overlooking the iconic Queens Park, just moments to vibrant Puckle Street and Moonee Valley racecourse, this home is not just a place to live but a lifestyle to be enjoyed.

This property offers a prime redevelopment opportunity

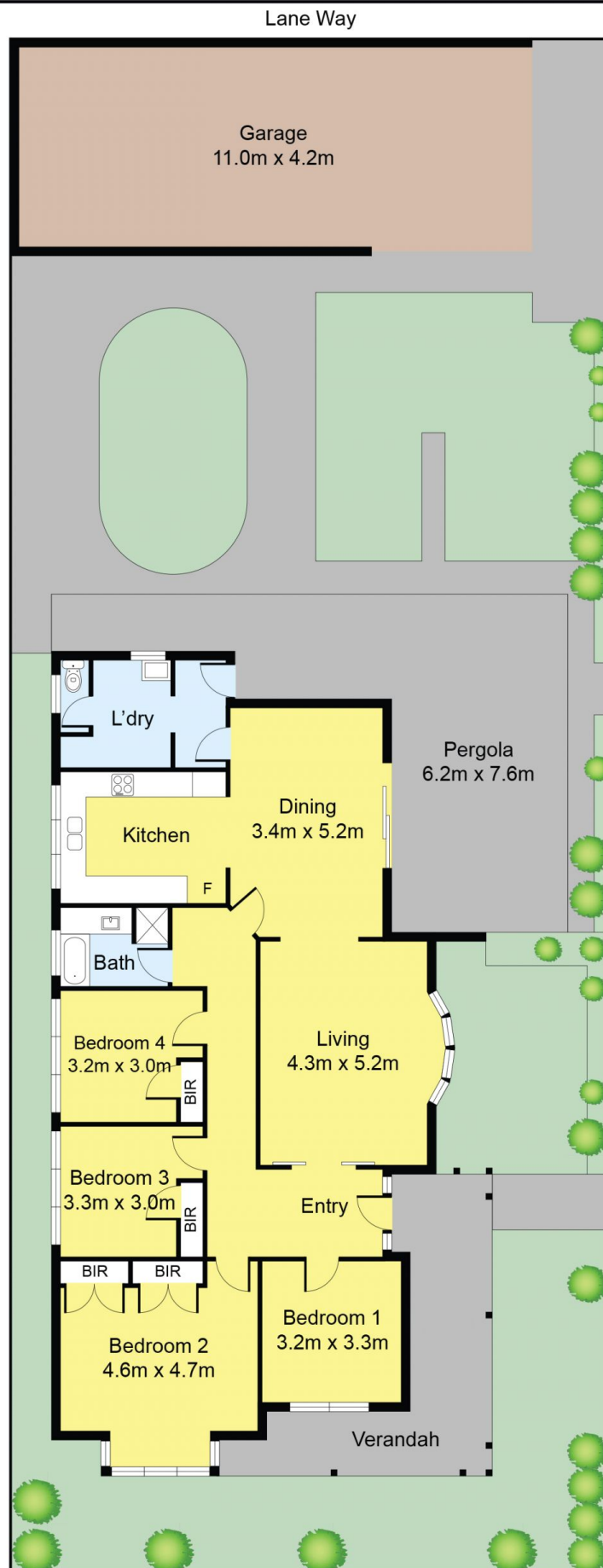
Price : \$1,400,000 - \$1,500,000
Land Size : 430 sqm
View : <https://www.ypa.com.au/8124376>



Gioan Pham
0422 804 082



John Fumi
0419 541 043



Disclaimer: Whilst we believe the contents of this document to be accurate, we suggest the prospective purchasers make any necessary enquiries to satisfy themselves. All measurements are approximate. We do not accept responsibility for any errors or omissions.

2 Thomas Street, Moonee Ponds

