



1/200 Melrose Drive TULLAMARINE VIC

2  1  2 

Positioned in a sought-after area close to shops, transport, and essential amenities, this elegant first-floor apartment combines convenience with modern living.

Price : Private Sale | \$399,999

View : <https://www.ypa.com.au/8125116>

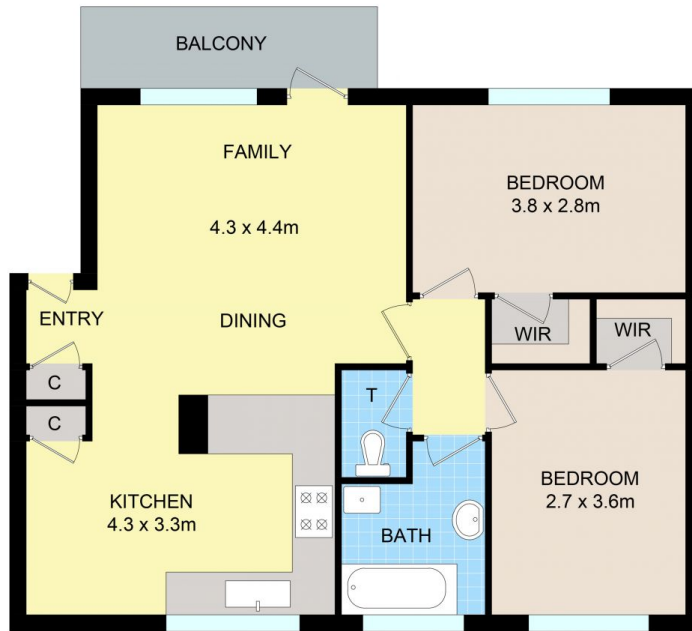
The residence features an open-plan living and dining area that seamlessly extends to a private balcony, offering picturesque views of beautifully maintained gardens. A brand new, well-appointed kitchen with ample storage enhances the home's functional design, making it ideal for everyday living and entertaining.

The apartment includes two spacious bedrooms with built-in robes, providing plenty of storage. The thoughtfully designed bathroom also incorporates a laundry area and is complemented by a separate toilet for added convenience.

Residents can enjoy exclusive access to premium



Jake Lisner
0437 399 908



1/200 Melrose Dr, Tullamarine

Disclaimer: Floor plan is for marketing purposes and is to be used as a guide only. Measurements are approximate and for illustrative purposes. Interested parties should make and rely on their own enquiries or refer to contract drawings for more accurate information.