



15/112A Mickleham Road Tullamarine VIC

2 **1** **1**

Surprisingly spacious and flooded with natural light this north-facing single storey property is a fabulous opportunity for first homebuyers, retirees and investors alike.

Price : Private Sale | \$535,000

View : <https://www.ypa.com.au/8125120>

Tastefully updated interiors ensure an immediately comfortable lifestyle. In a well-maintained garden community, close to Westfield Shopping Centre and local shops, it also enjoys easy bus, airport and freeway access and zoning for Gladstone Park College.

Offering 2 double bedrooms, a spacious and bright living room, renovated kitchen/meals (which flows out to a great sized garden), pristine bathroom, laundry, separate w/c, and lock-up garage. Includes modern floors, crisp white colour scheme, heating/cooling, laundry storage and much more.

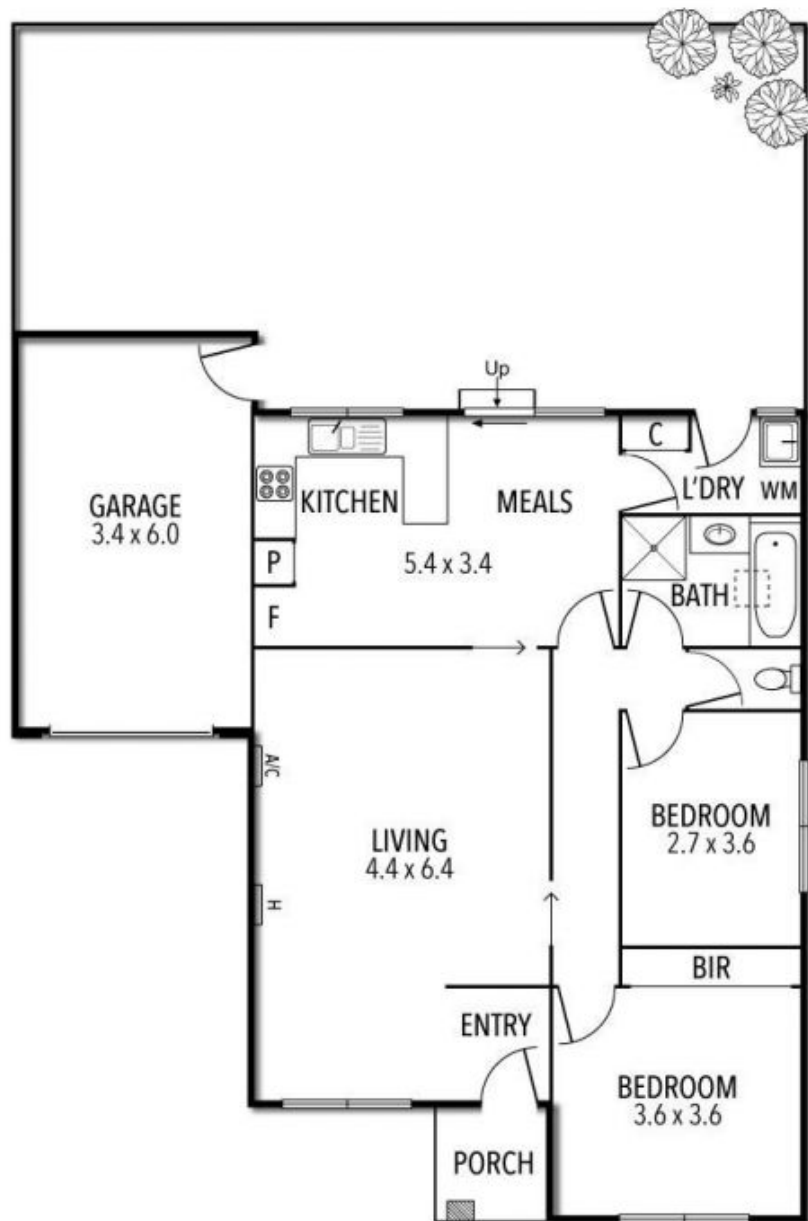


Luke Albioli
0403 700 003



Jake Lisner
0437 399 908

15/112 MICKLEHAM ROAD, TULLAMARINE



THE ABOVE PLAN IS AN ARTIST'S IMPRESSION ONLY, IT INCLUDES ELEMENTS THAT ARE FOR DISPLAY PURPOSES ONLY AND MAY NOT BE TO SCALE. LANDSCAPING SHOWN IS INDICATIVE ONLY. DIMENSIONS ARE APPROXIMATE.