



36 Walara Drive Mount Martha VIC

3 2 2

Welcome to a home where pristine presentation and a prime location come together seamlessly. Situated on a generous 873m² corner block in Mount Martha, this property is perfectly positioned within walking distance to Mount Martha Primary, Balcombe Grammar, local shops, and the beach.

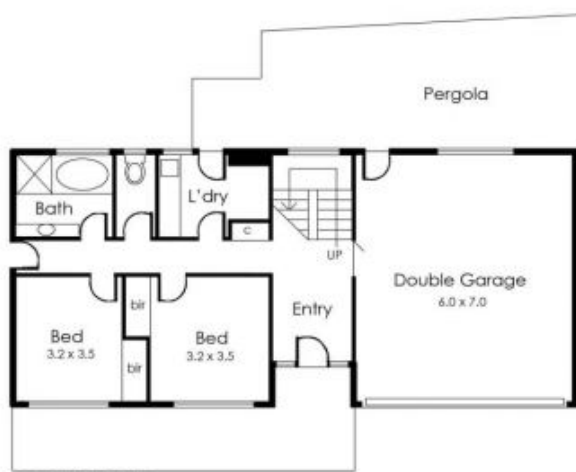
Step into a meticulously maintained residence where every detail reflects careful attention. The home features a north-facing balcony that stretches across the entire façade, offering stunning bay views?ideal for both relaxing and entertaining. Inside, you'll find new windows and sliding doors throughout, complemented by solid timber floors that add warmth and character.

The living spaces are thoughtfully designed with a gas fireplace for cosy nights in, and efficient ducted heating and

Price : \$1,550,000 - \$1,595,000
Land Size : 873 sqm
View : <https://www.ypa.com.au/8125547>



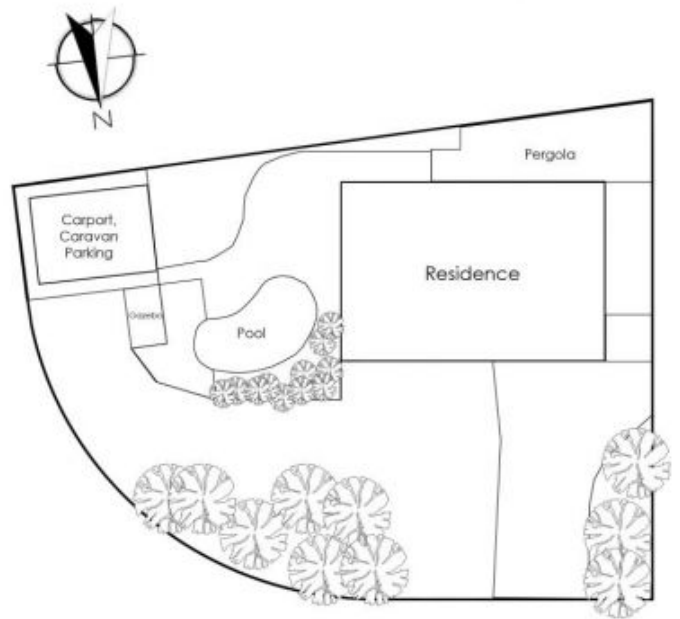
Michael Dimech
 0417 399 511



GROUND FLOOR



FIRST FLOOR



36 Walara Drive, Mount Martha

measurements are indicative only