



## 1 Cornwall Park Court Toolern Vale VIC

7 4 10

Located in the picturesque suburb of Toolern Vale, this fantastic family home offers a great opportunity for everyone! With a modern design and functional floorplan with a family first approach, accompanied by its vast paddock space and large shed for any family to use. With close proximity to Toolern Vale Primary School and the brand-new Melton Christian College (prep to year 12) Toolern Vale Campus while also providing easy access to Bacchus Marsh, Melton and Gisborne.

Welcoming you through the electric gates the sprawling land opens up with huge access for any vehicle including trucks, caravans, or construction equipment. The double doors open up leading you inside this fantastic domain where two great sized formal lounges await, designed with the growing family in mind being either used as living areas, or study spaces.

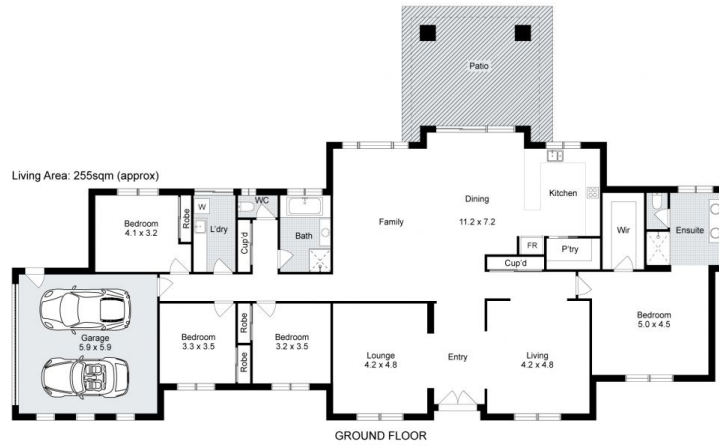
**Price** : \$1,899,000 - \$1,999,000  
**Land Size** : 1.02 ha  
**View** : <https://www.ypa.com.au/8128236>



**Shane Spiteri**  
0488 980 115



**Ricky Frew**  
0402 007 100



# 1 Cornwall Park Court, Toolern Vale

Whilst every attempt has been made to ensure the accuracy of the floor plan contained here, measurements of doors, windows, rooms and any other items are approximate and no responsibility is taken for any error, omission, or mis-statement. This plan is for illustrative purposes only and should be used as such by any prospective purchaser. The services, systems and appliances shown have not been tested and no guarantee as to their operability or efficiency can be given.

