



## 19 Mitchell Road Melton South VIC

3 1 2

Situated on a generous 594m<sup>2</sup> (approx.) block in the highly sought-after area of Melton South, this property is ideally located close to a range of amenities including Al Iman College, Staughton College, Melton South Primary School, and St. Anthony's Primary School within easy reach. Additionally, the home is conveniently close to freeway access, Melton Train Station, bus stops, and local parks.

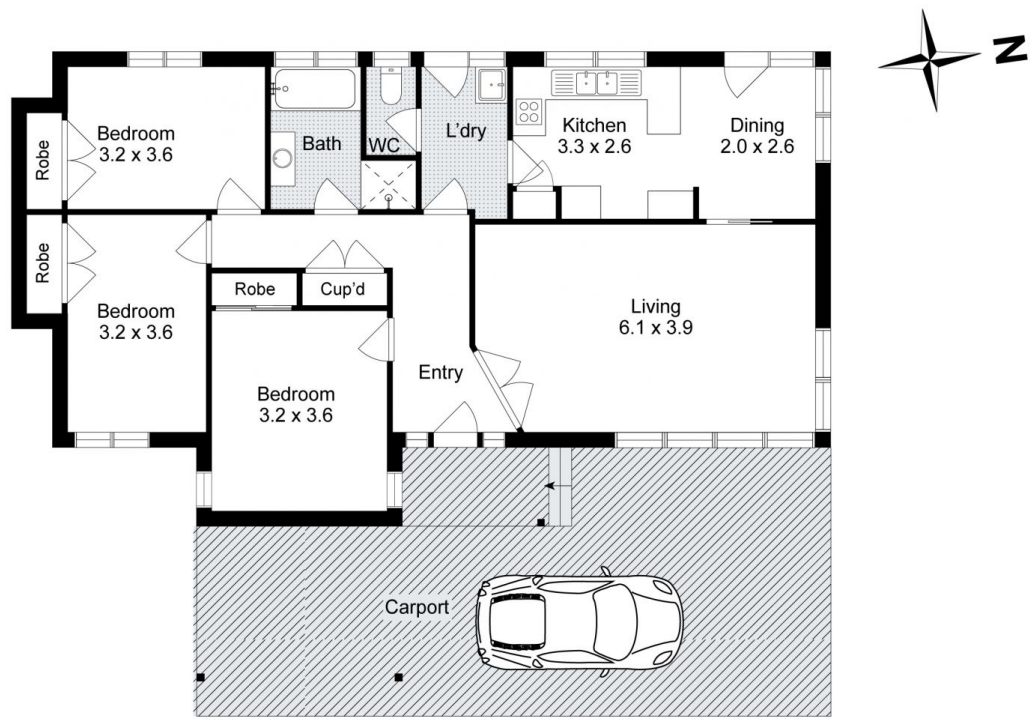
As you step inside, you'll be greeted by a spacious and inviting lounge room with plenty of natural light, making it the perfect spot for family gatherings or relaxing after a long day. The lounge flows effortlessly into the dining area, which is ideal for hosting family dinners. The well-maintained kitchen features a laminate benchtop, cooktop, rangehood, and ample storage space.

The home offers three generously sized three bedrooms

**Price** : \$459,000 - \$489,000  
**Land Size** : 594 sqm  
**View** : <https://www.ypa.com.au/8129239>



**Monty Tyagi**  
 0435 896 907



## 19 Mitchell Road, Melton South

Whilst every attempt has been made to ensure the accuracy of the floor plan contained here, measurements of doors, windows, rooms and any other items are approximate and no responsibility is taken for any error, omission, or mis-statement. This plan is for illustrative purposes only and should be used as such by any prospective purchaser. The services, systems and appliances shown have not been tested and no guarantee as to their operability or efficiency can be given.