



## 1/2a Pengana Street Rosebud VIC

3 2 2

This Quality Built Home will impress with Features & Location and will serve you perfectly as a Permanent or Holiday Home. No need to use the car, everything you would want to get to is just a short & pleasant walk away!

**Price** : \$1,195,000

**View** : <https://www.ypa.com.au/8129358>

### FEATURING:

#### LOCATION

? North Facing Property with beautiful views to Arthurs Seat

? Approx. 5 minutes' walk to the Foreshore

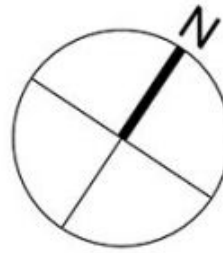
? Approx. 10 minutes 'walk to the McCrae Shopping Centre

? Approx. 12 minutes' walk to the Rosebud Woolworths &

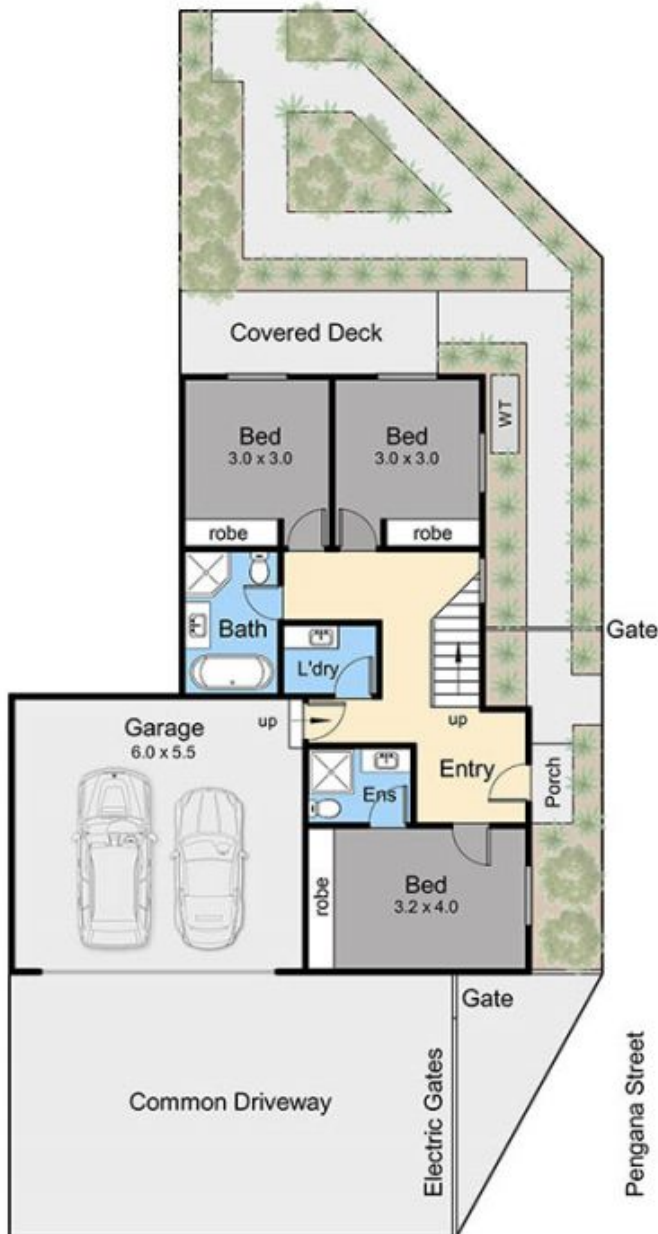


**Elke Remscheid**  
0423 211 315

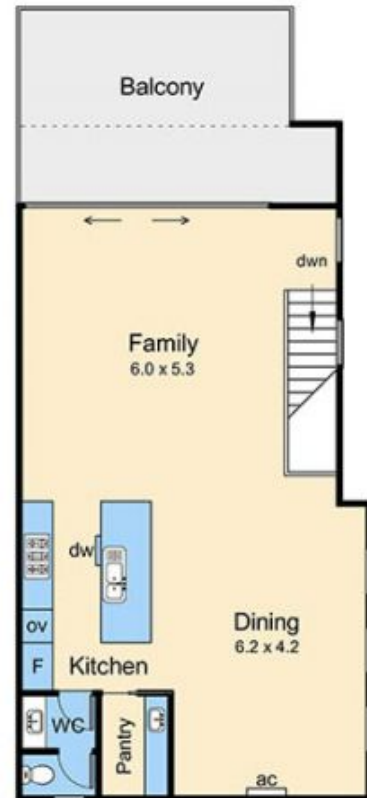
Internal area = 16 squares (approx)  
 Balcony / Deck area = 3.4 squares (approx)  
 Garage area = 3.8 squares (approx)  
 Total area = 23.2 squares (approx)



Rosemore Road



Lower Floor



Upper Floor

## 1/2A Pengana Street, Rosebud

This floorplan is for illustration purposes only and no warranty is given to its accuracy. Purchasers are advised to carry out their own investigations. Produced by **realitywriters** (03) 5970 2222