

10 Valencia Street WEIR VIEWS VIC

3  2  1 

Situated in one of the most desirable, heavily enquired pockets of Weir Views, also known as Exford Waters Estate, this home is within close proximity to Melton Train Station, schools, parks, Opalia Shopping Centre, the Weir, freeway access, walking distance to St Lawrence of Brindisi Catholic School and much more future development to come in this beautiful location, it is easy to see why the area is in such high demand with investors and families.

This Brand New construction was completed just a few months ago and has just recently been leased out to the most loveliest of tenants, who take amazing care of the home and keep it in immaculate condition. The current lease is of a duration of 12 month on \$430 per week (\$1868 per calendar month)

Price : \$479,000 - \$509,000

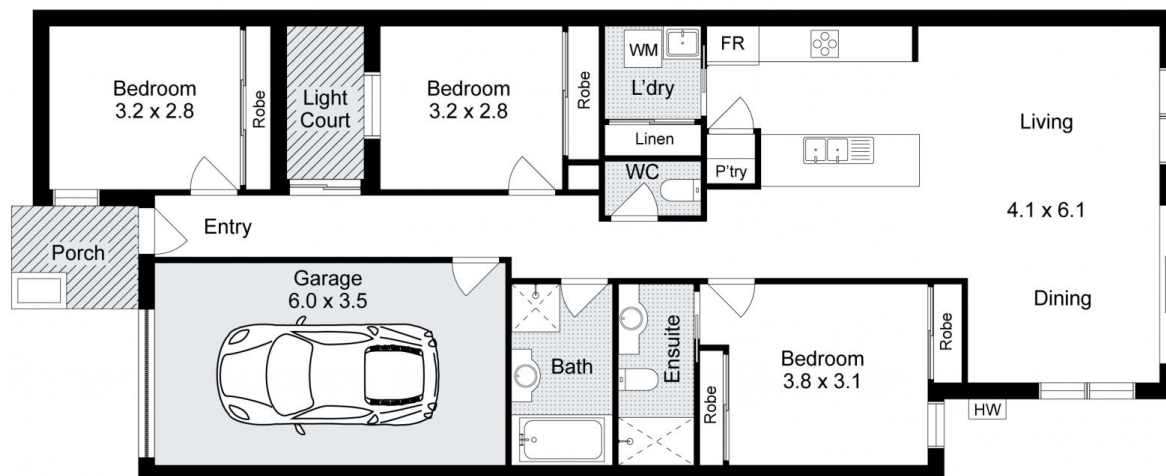
View : <https://www.ypa.com.au/8131903>



Junior MuBashar
0450 644 606



Living Area: 130sqm (approx)



10 Valencia Street, Weir Views

Whilst every attempt has been made to ensure the accuracy of the floor plan contained here, measurements of doors, windows, rooms and any other items are approximate and no responsibility is taken for any error, omission, or mis-statement. This plan is for illustrative purposes only and should be used as such by any prospective purchaser. The services, systems and appliances shown have not been tested and no guarantee as to their operability or efficiency can be given.

