

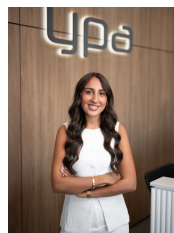
16 Ninda Court Westmeadows VIC

3 1 2

- Hardwood flooring that flows throughout the home
- Spacious living room
- Separate dining area
- Renovated kitchen area
- Three bedrooms, each with built-in robes
- Recently updated central bathroom complete with a bath and open shower
- Large backyard space
- Double Carport with work shed
- Conveniently located close to local amenities, parks, walking tracks, schools, major roads, and freeways.

PLEASE BRING ID TO ALL OPEN FOR INSPECTIONS.

Price : \$490 PW
Land Size : 606 sqm
View : <https://www.ypa.com.au/8132491>



Alexandra Bugeja
0499 974 273



DISCLAIMER: PLEASE NOTE PLANS ARE INDICATIVE ONLY AND NOT DRAWN TO SCALE.

