



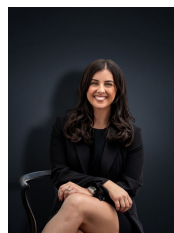
## 4 McKenzie Crescent Hoppers Crossing VIC

3  1  2 

Positioned brilliantly within walking distance to Pacific Werribee Shopping Centre offering Restaurants, Café's, Shopping & Village Cinemas, Bus Stops and reputable schooling including Cambridge Primary School & Heathdale Christian College.

**Price** : \$600,000 - \$660,000  
**Land Size** : 713 sqm  
**View** : <https://www.ypa.com.au/8132835>

With a long list of endless potential this home defines the slogan of Location, Location, Location! Satisfying the needs as a brilliant first home, downsize or a smart investment with development potential (STCA) this one is sure to attract a large and versatile crowd of buyers! Freshly repainted throughout and offering brand new carpets the home offers;



**Kirsty Cunningham**  
0414 344 475



**Kiarah Bagnato**  
0449 941 895

- ? Three spacious bedrooms with built in robes
- ? Large L-Shaped lounge space with adjacent study space
- ? Central two-way bathroom

# 4 McKenzie Crescent, HOPPERS CROSSING



Whilst every attempt has been made to ensure the accuracy of the floor plan contained here, measurements of doors, windows, rooms and any other items are approximate and no responsibility is taken for any error, omission, or mis-statement. This plan is for illustrative purposes only and should be used as such by any prospective purchaser. The services, systems and appliances shown have not been tested and no guarantee as to their operability or efficiency can be given.