



13 Control Street Greenvale VIC

4 3 2

Located in the most breathtaking of surrounds with Mt Aitken Reserve/Playground at the very top of the street, this bespoke 25 square (approx.) single level sanctuary oozes "wow" factor with its commanding black rendered finish?putting an end to all your searching!

Fully upscaled and completed in early 2023 by renowned "Ozcan Constructions?", why even consider building yourself when such a rare option ticking all the boxes exists? Ready for you to move into and enjoy this summer!

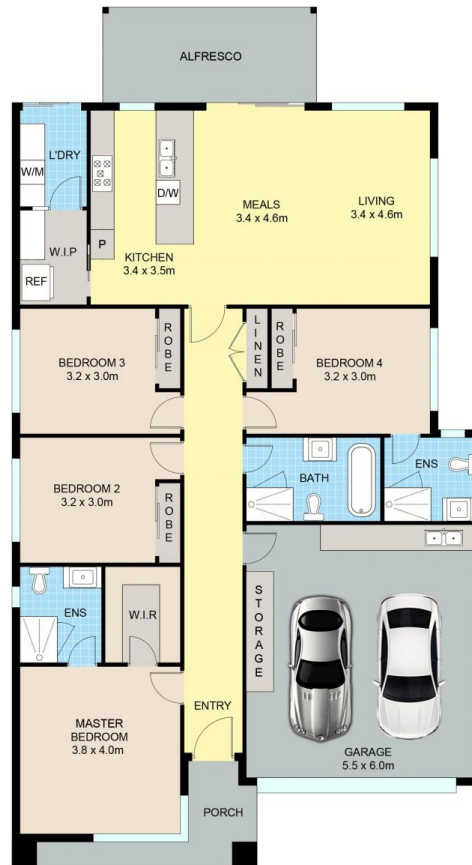
Comprising:

- Extra wide entry corridor with sensor wall lights and zone off sliding door
- Four bedrooms fitted with fully customised walk-in/built-in mirrored robes and plush pile carpet
- Three matching bathrooms straight out of Vogue

Price : Auction | \$715k - \$739,000
Land Size : 312 sqm
View : <https://www.ypa.com.au/8134002>



Jason Padula
 0402 149 436



13 Control St, Greenvale.

Disclaimer: Floor plan is for marketing purposes and is to be used as a guide only. Measurements are approximate and for illustrative purposes. Interested parties should make and rely on their own enquiries or refer to contract drawings for more accurate information.