

7 Silvereye Street Kurunjang VIC

4 2 2

Ideally situated within a new estate of Kurunjang, across from a massive parkland and within only a short distance to all this growing suburb has to offer including schools of all levels, shops, recreational ovals, parklands, walking tracks, public transport and so much more.

Showcasing impeccable street appeal, finished with manicured gardens, wide driveway complete with exposed aggregate concreting and a modern façade with a front fence and weather board, this family home will leave you awe from first glance.

Upon entry you are met by a pleasant entrance with 9ft ceilings, floorboards and a neutral colour scheme that flows throughout. This wonderful home comprises of four bedrooms all with built in robes, the master with a great sized walk-in robe and ensuite finished with upgrades such as 400mm feature stone bench, an inbuilt wall niche in the

Price : \$599,900 - \$659,000
Land Size : 375 sqm
View : <https://www.ypa.com.au/8134213>

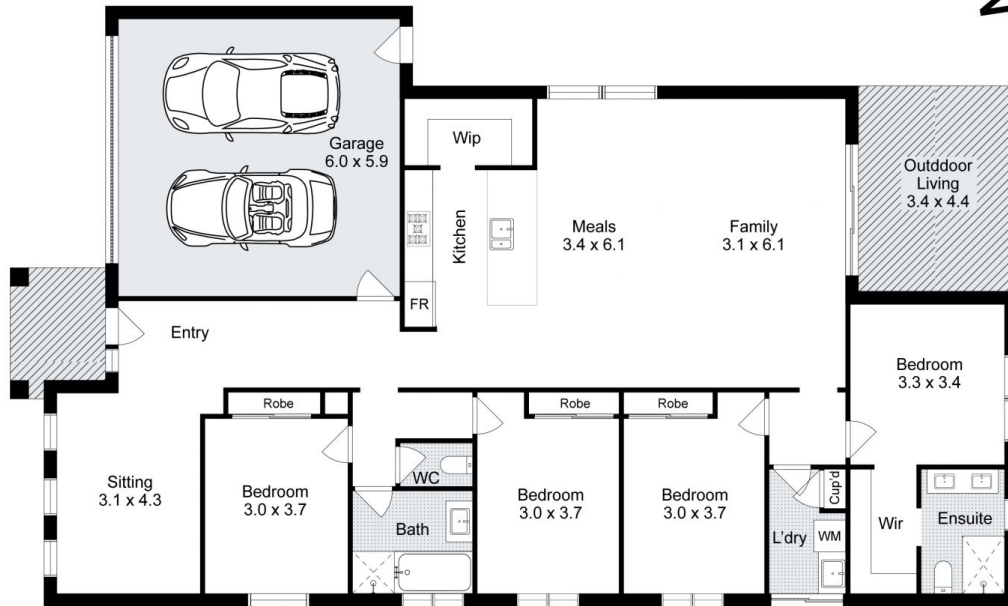


Ryan Anders
0434 900 300



Britteny Cooke
0426 211 338

Living Area: 198sqm (approx)



7 Silvereye Street, Kurunjang

Whilst every attempt has been made to ensure the accuracy of the floor plan contained here, measurements of doors, windows, rooms and any other items are approximate and no responsibility is taken for any error, omission, or mis-statement. This plan is for illustrative purposes only and should be used as such by any prospective purchaser. The services, systems and appliances shown have not been tested and no guarantee as to their operability or efficiency can be given.

