



## 6 Kris Court Melton West VIC

3  2  2 

In the heart of Melton West sits the opportunity to secure a stunning home in a family friendly court on a massive 805m<sup>2</sup> (approx.) block, close by to all amenities such as: Woodgrove shopping centre, schooling of all levels including St Francis Catholic College, childcare, parks, public transport, shops, and freeway access. Well cared for since its establishment, this home is sure to impress.

Upon entering this warm and welcoming home, you're greeted by one of two living areas, where the generous proportions and functional floorplan are immediately noticeable.

This area seamlessly flows into the dining room and the well-equipped galley-style kitchen, which features, an gas cooktop, rangehood, double basin sink, and ample storage.

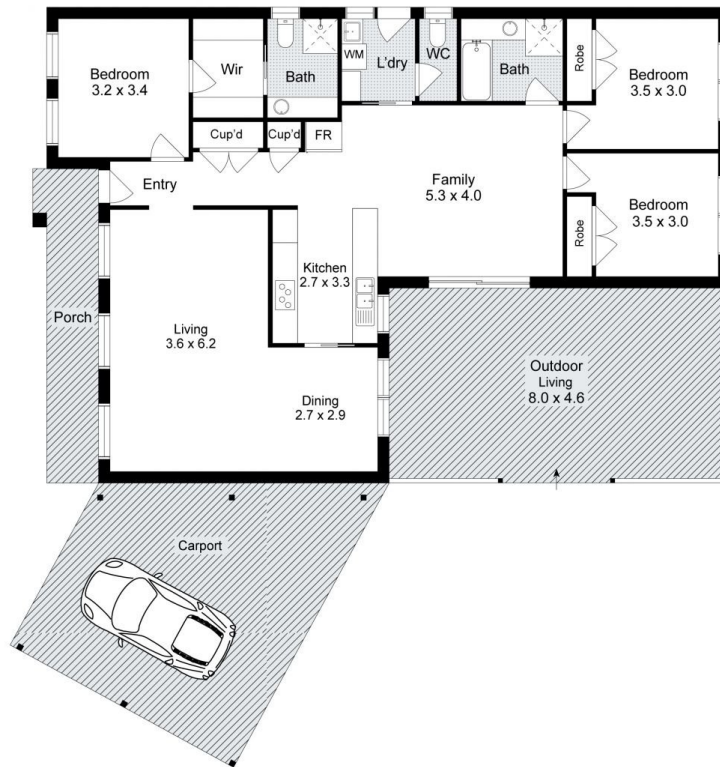
**Price** : \$509,000 - \$559,000  
**Building Size** : 155 sqm  
**Land Size** : 805 sqm  
**View** : <https://www.ypa.com.au/8136488>



**Shane Spiteri**  
0488 980 115



**Tahlia Hall**  
0422 419 589



## 6 Kris Court, Melton West

Whilst every attempt has been made to ensure the accuracy of the floor plan contained here, measurements of doors, windows, rooms and any other items are approximate and no responsibility is taken for any error, omission, or mis-statement. This plan is for illustrative purposes only and should be used as such by any prospective purchaser. The services, systems and appliances shown have not been tested and no guarantee as to their operability or efficiency can be given.

