



12 Axel Walk Cranbourne North VIC

2  1  1 

Discover the perfect blend of comfort and convenience with this affordable townhouse located on Axel Walk, Cranbourne North. This charming residence offers an excellent opportunity for first-time homebuyers, young families, or savvy investors looking to expand their portfolio. With its modern design and functional layout, this townhouse is ready to welcome you home.

Price : Premium Location!!! \$409K - \$449K
View : <https://www.ypa.com.au/8136602>

Experience lifestyle perfection in this contemporary 2-bedroom townhouse offering the utmost comfort and convenience close to The Avenue Shopping Centre. A modern interior offers quality and exemplary space, relishing a north-south aspect for brilliant all-day light.

At its core, an open-plan living area sets the stage for elegant living and entertaining, bookended by a full-width balcony and a galley kitchen with premium appliances and

GROUND FLOOR



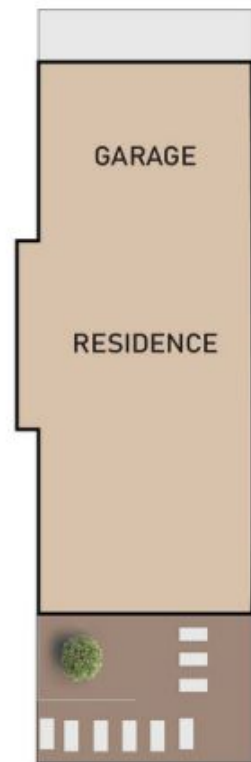
LEVEL 1



LEVEL 2



SITEPLAN



12 AXEL WALK, CRANBOURNE NORTH



FLOOR AND SITE PLAN IS FOR ILLUSTRATIVE PURPOSES ONLY AND NOT TO SCALE. THE VENDOR, AGENCY OR SUPPLIER MAKE NO GUARANTEE, WARRANTY OR REPRESENTATION AS TO THE ACCURACY OF ANY INFORMATION CONTAINED HEREIN AND THE COMPLETENESS OF THE FLOOR PLANNED WILL ACCEPT NO LIABILITY FOR ITS ACCURACY. INTERESTED PARTIES ARE ADVISED TO MAKE THEIR OWN INDEPENDENT ENQUIRIES.

GROUND FLOOR



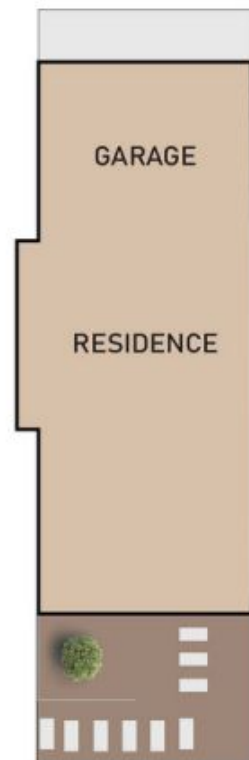
LEVEL 1



LEVEL 2



SITEPLAN



12 AXEL WALK, CRANBOURNE NORTH



FLOOR AND SITE PLAN IS FOR ILLUSTRATIVE PURPOSES ONLY AND NOT TO SCALE. THE VENDOR, AGENCY OR SUPPLIER MAKE NO GUARANTEE, WARRANTY OR REPRESENTATION AS TO THE ACCURACY OF ANY INFORMATION CONTAINED HEREIN AND THE COMPLETENESS OF THE FLOOR PLANNED WILL ACCEPT NO LIABILITY FOR ITS ACCURACY. INTERESTED PARTIES ARE ADVISED TO MAKE THEIR OWN INDEPENDENT ENQUIRIES.