



140 Gisborne Road Darley VIC

3  1  2 

The meticulously presented home at 140 Gisborne Road situated on a generous sized block of approximately 650m², this residence features a practical floorplan and tasteful renovations, ensuring comfortable living for its occupants.

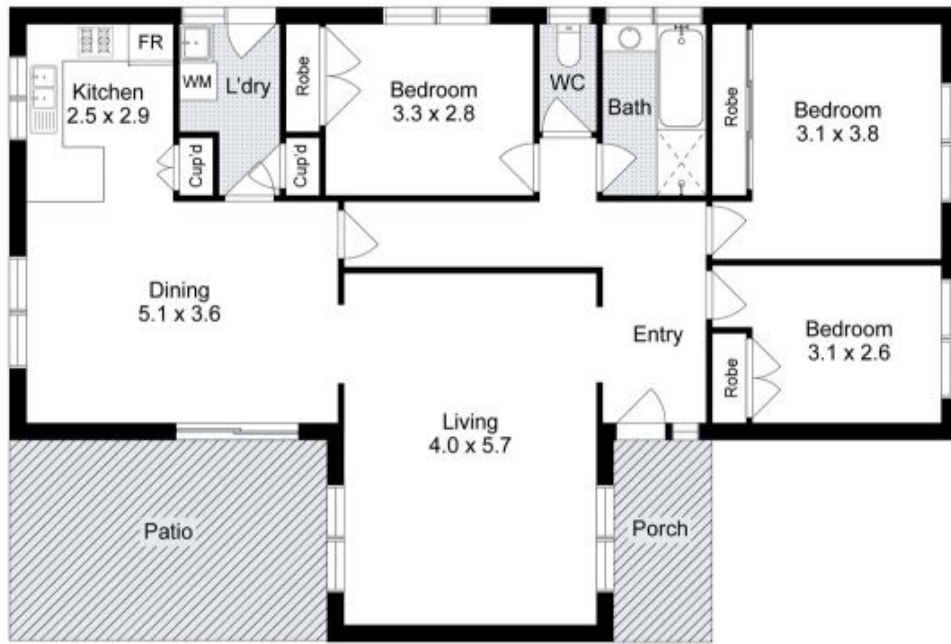
Conveniently located just minutes away from the much-loved Darley Bakery, Darley IGA shopping precinct, Rapha Bulk-Billing Doctors Office, Western Freeway entrance, and nearby primary and secondary schools, this property offers accessibility to essential amenities and transportation routes.

Upon entering the property, you're greeted by a spacious living room, with large windows flooding the room with natural light. The living zones seamlessly flow together to the adjoining dining and kitchen area, with inviting garden

Price : \$499,000 - \$539,000
Building Size : 150 sqm
Land Size : 650 sqm
View : <https://www.ypa.com.au/8136827>



Izabel Dusik
0421 833 010



140 Gisborne Road, Darley



Whilst every attempt has been made to ensure the accuracy of the floor plan contained here, measurements of doors, windows, rooms and any other items are approximate and no responsibility is taken for any error, omission, or mis-statement. This plan is for illustrative purposes only and should be used as such by any prospective purchaser. The services, systems and appliances shown have not been tested and no guarantee as to their operability or efficiency can be given.

open2view.com.au