



57 Leon Avenue Rosebud VIC

3  1  6 

* Inspection by Private Appointment *

Presenting extraordinary potential for the future, this unique weatherboard retreat serves as a comfortable foundation for creative thinkers and developers alike. Set on a generous plot in one of Rosebud's delightful beachside communities, this prime location provides direct access to Rosebud Foreshore, Rosebud Primary School and Rosebud Beach Shopping Plaza.

Totally secure and private in every sense, the thoughtfully-orientated home paves the way with subdivision potential (STCA), as a long side drive opens beyond the home to a generous rear yard complete with a tandem carport, a rear double garage currently converted into a leisure lounge with wood heater and a sound-proof room perfect for band practice.

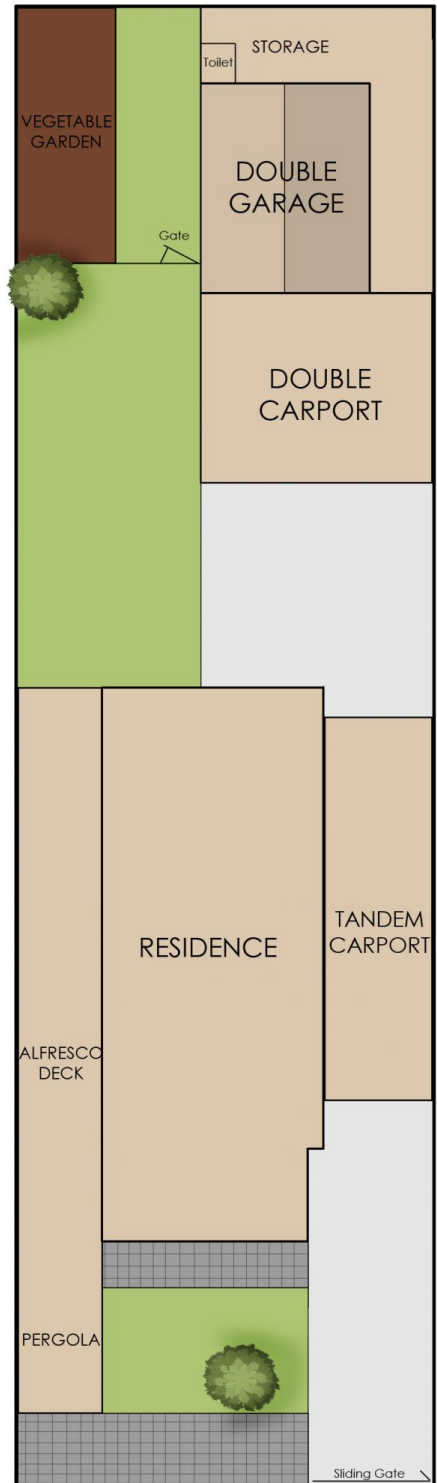
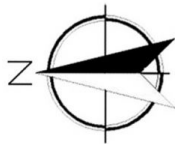
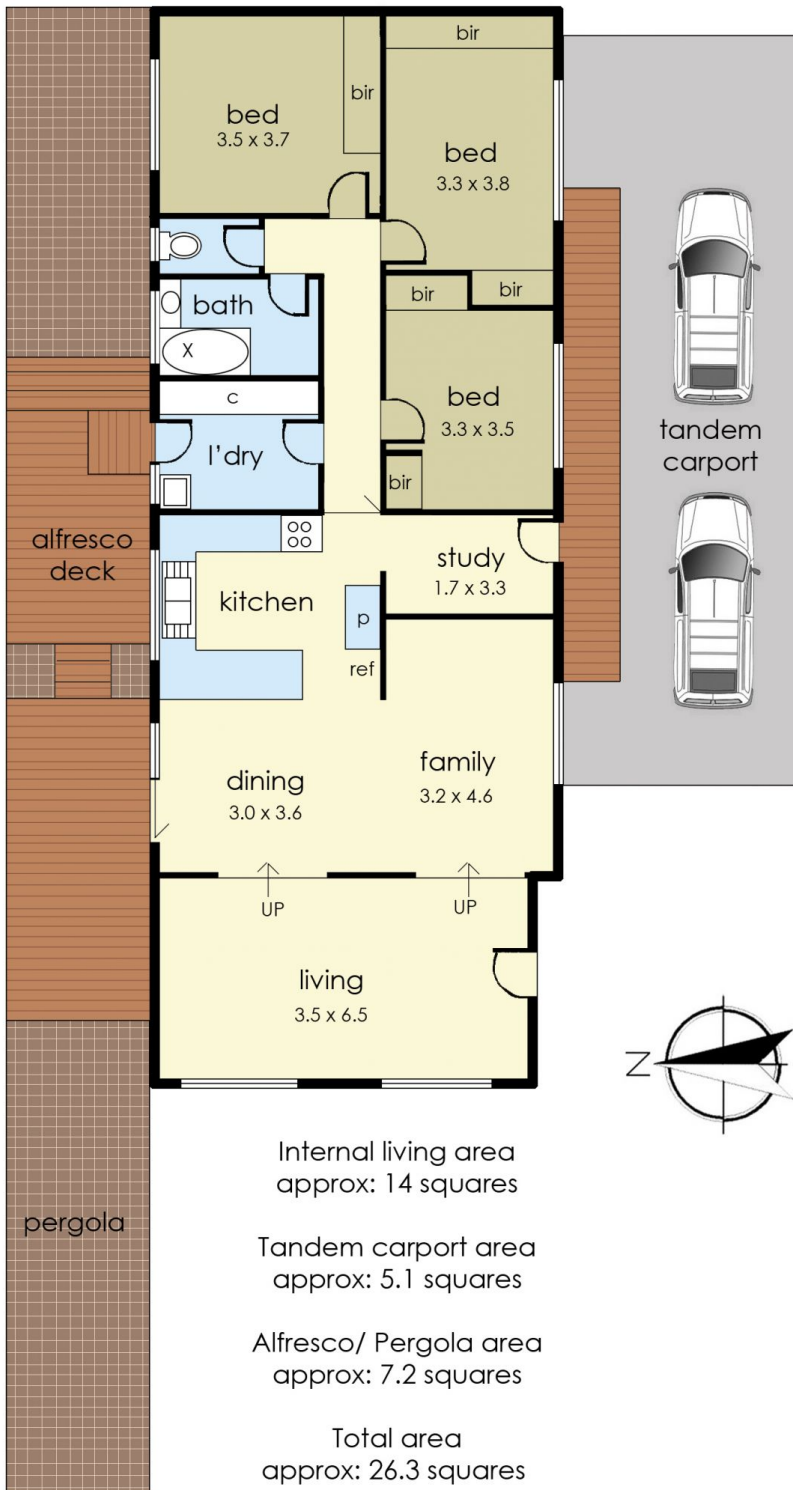
Price : \$700,000 - \$770,000
Land Size : 841 sqm
View : <https://www.ypa.com.au/8138556>



Ryan O'Connor
0422 564 474



Chris Fahl
0404 668 818



57 Leon Avenue, Rosebud

© Produced by DND Floor Plans

This floorplan is for illustration purposes only and no warranty is given to its accuracy. Purchasers are advised to carry out their own investigations.