

## 4 Equality Street Clyde North VIC

4  2  2 

Nestled on Equality Street in the vibrant suburb of Clyde North, this delightful 4-bedroom, 2-bathroom home offers an excellent opportunity for families looking to settle in a thriving community. The property boasts a spacious layout with modern amenities, including efficient heating and refrigerated cooling to ensure comfort throughout the year. The double garage provides ample space for vehicles and storage.

**Price** : \$660,000 - \$720,000

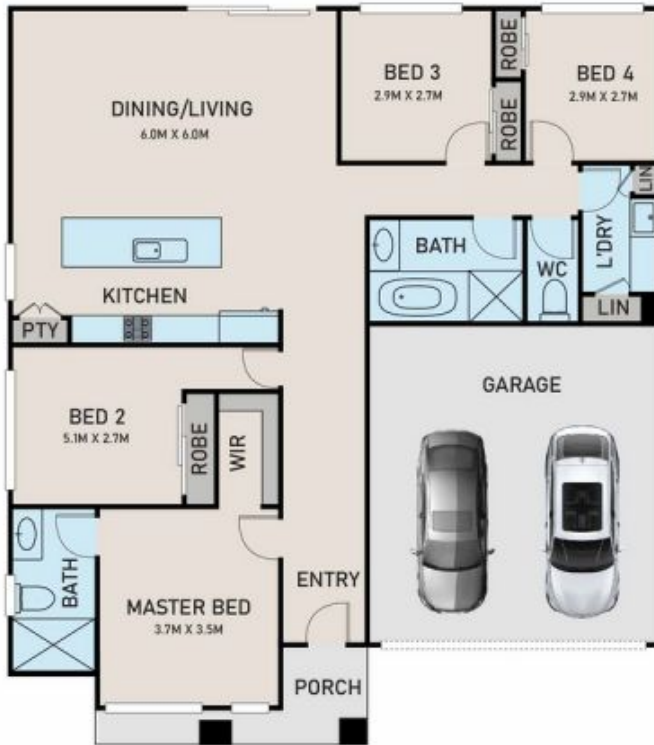
**View** : <https://www.ypa.com.au/8138755>

Clyde North is known for its family-friendly environment, with numerous parks and recreational facilities nearby. The area is also home to reputable schools such as Clyde Primary School and Hillcrest Christian College, making it an ideal location for families with children. With easy access to public transport and major highways, commuting to Melbourne CBD or other suburbs is a breeze.

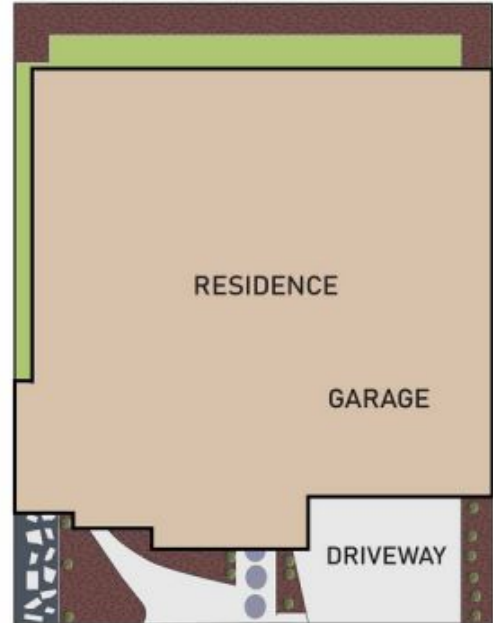


**Kamaljeet Singh**  
0433 619 387

## FLOOR PLAN



## SITE PLAN



ypa



## 4 EQUALITY STREET, CLYDE NORTH

FLOOR AND SITE PLAN IS FOR ILLUSTRATIVE PURPOSES ONLY AND NOT TO SCALE. THE VENDOR, AGENCY OR SUPPLIER MAKE NO GUARANTEE, WARRANTY OR REPRESENTATION AS TO THE ACCURACY OF ANY INFORMATION CONTAINED HEREIN AND THE COMPLETENESS OF THE FLOOR PLANNED WILL ACCEPT NO LIABILITY FOR ITS ACCURACY. INTERESTED PARTIES ARE ADVISED TO MAKE THEIR OWN INDEPENDENT ENQUIRIES.