



8/5-6 Chelsworth Place Caroline Springs VIC

2 2 1

A brilliant entry into the suburb of Caroline Springs, this cosy property is a winning choice either way with its affordability and superb location! Embrace yourself for the best living located only walking distance to Caroline Springs Boulevard, local primary and secondary schools, public transport, Caroline Springs Shopping Centre and the list goes on.

Features Include:

Ground Floor

- ? Master bedroom showcases a walk-in wardrobe, ensuite and outdoor patio access
- ? An additional spacious bedroom with a built-in wardrobe
- ? Central bathroom with bathtub and shower
- ? European laundry
- ? Single car garage on remote with internal access

Price : PRIVATE SALE | \$440,000 - \$480,000
Land Size : 156 sqm
View : <https://www.ypa.com.au/8139171>

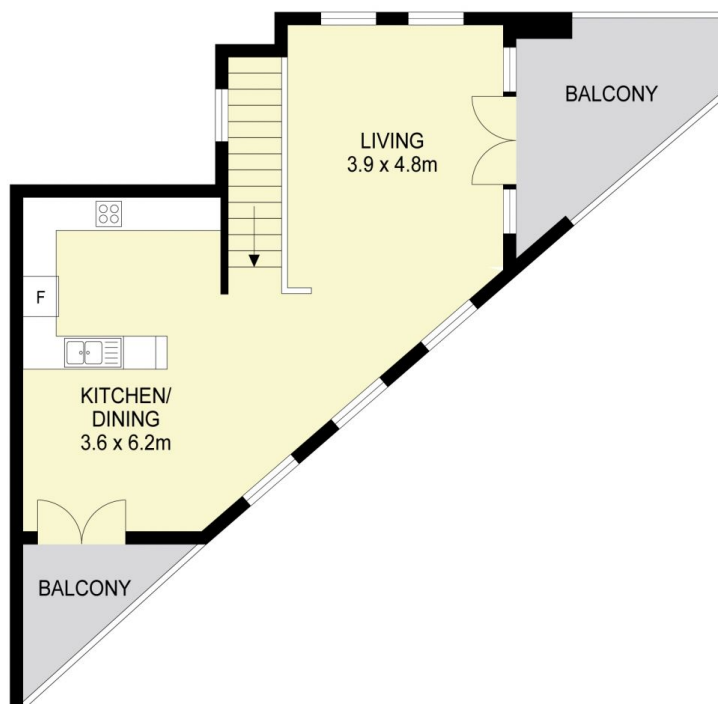


Andrew Migliorisi
0432 526 844



Stephen Azzopardi
0402 012 554

8/5-6 Chelsworth Place, Caroline Springs



Scale in metres Indicative only. Dimensions are approximate. All information contained herein is gathered from sources we believe to be reliable. However we cannot guarantee its accuracy and interested persons should rely on their own enquiries

Internals :134m²