



49 Shipwright Parade Werribee VIC

4  2  2 

49 Shipwright Parade, Werribee.

Welcome to this luxe family style home with character & charm from the moment you walk through the front door.

You will be greeted by a large entrance way leading into the massive master bedroom with WIR & ensuite. Following to an additional bedroom with BIR opening out to the large open plan style Kitchen, meals & dining space with 2 separate formal living zones. Down the hallway you will find an additional 2 bedrooms with central bathroom & separate toilet and laundry space. Fitted with stainless steel appliances, ducted heating & evaporative cooling accommodating for all the seasons all year round. Surrounded by many reputable schools and within close proximity to Wyndham Vale Train Station and Werribee Train Station.

And if that's not enough, you can appreciate a very

Price : GRAND OPENING SATURDAY! \$675,000 - \$742,500

View : <https://www.ypa.com.au/8141135>

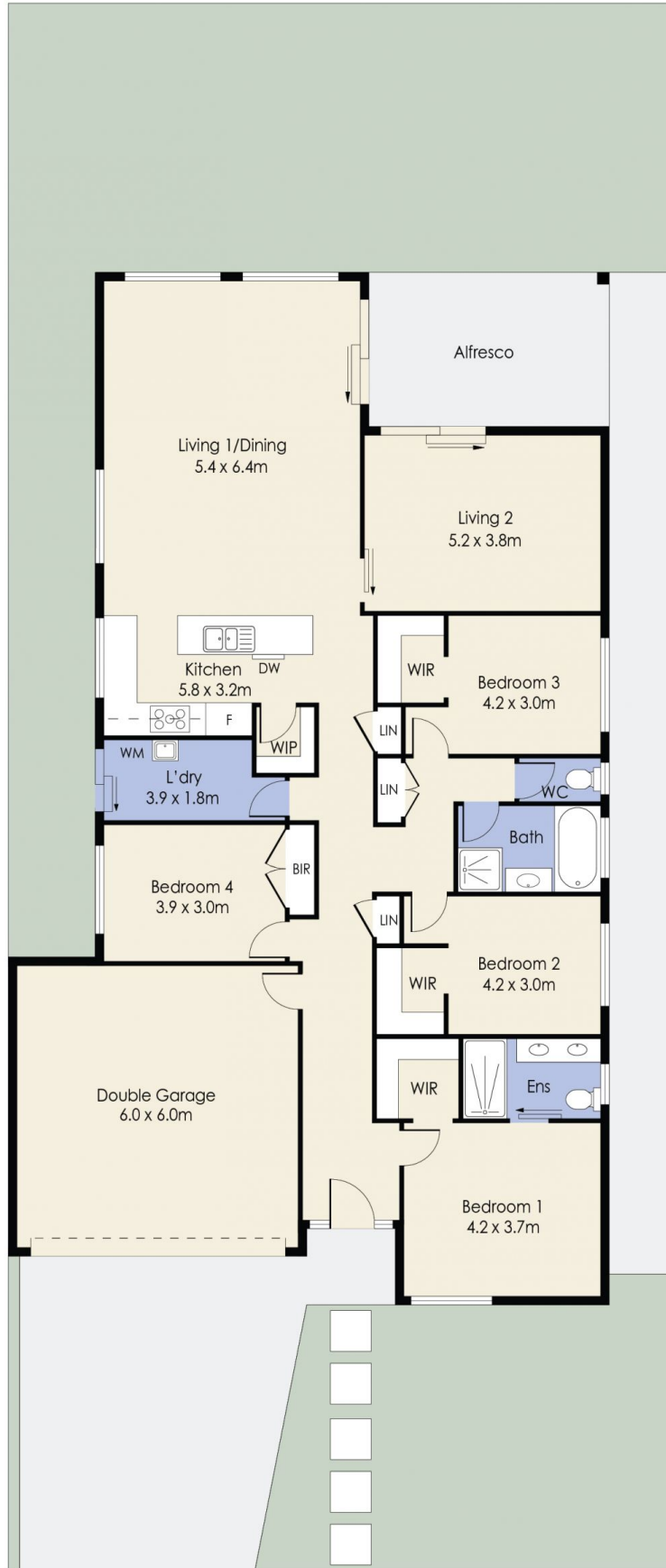


Kiarah Bagnato
0449 941 895



Mitch Smit
0450 913 513

49 Shipwright Parade, WERRIBEE



Whilst every attempt has been made to ensure the accuracy of the floor plan contained here, measurements of doors, windows, rooms and any other items are approximate and no responsibility is taken for any error, omission, or mis-statement. This plan is for illustrative purposes only and should be used as such by any prospective purchaser. The services, systems and appliances shown have not been tested and no guarantee as to their operability or efficiency can be given.