

2 Fellows Street Weir Views VIC

3 2 1

Tucked away privately in one of the best pockets of Weir Views is this stylish and convenient property that offers simple living in a convenient locale. Perfect for first home buyers, downsizers, and investors looking to add to their portfolio. Embrace yourself for the best living with all major amenities including Melton Train Station, quality primary and secondary schools, parklands, a few minute walk Werribee river and kids play ground, public transport, local shops (5 minute drive to Woodgrove shopping centre) and so much more!

Features include:

- ? Master bedroom showcasing a walk-in wardrobe and ensuite
- ? Additional two spacious bedrooms with built-in wardrobes
- ? The kitchen is located perfectly to incorporate the meals and family space

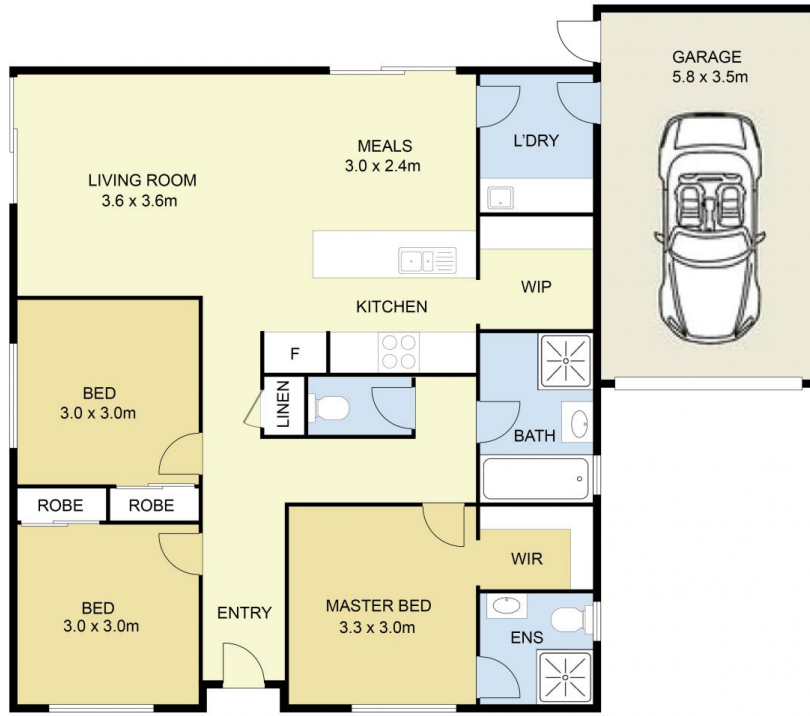
Price : PRIVATE SALE | \$480,000 - \$520,000
Land Size : 248 sqm
View : <https://www.ypa.com.au/8146672>



Andrew Migliorisi
0432 526 844



Stephen Azzopardi
0402 012 554



2 Fellows Street, Weir Views



DISCLAIMER : ALL DIMENSIONS ARE AN APPROXIMATION ONLY AND NO GUARANTEE IS GIVEN WITH RESPECT TO ACCURACY.