



119 Ingliston Drive Ingliston VIC

5 4 5

Meander down the spray sealed bitumen drive to his beautifully renovated estate of which boasts a 4-bedroom home, a separate guest cottage, and expansive land of 49 acres along the Werribee River to explore and enjoy. The main home offers comfort and style, with 4 spacious bedrooms, 3 bathrooms, and 2 large living areas spread across two levels.

The master bedroom, complete with an ensuite, and two additional bedrooms are located on the lower level, while the upper level features a fourth bedroom, an expansive living area with kitchenette, and a stunning picture window showing views of the property.

The kitchen is a chef's dream with modern cabinetry, a large black Belling oven with gas cooktop, and a generous island bench with solid stone insert. Comfort is guaranteed

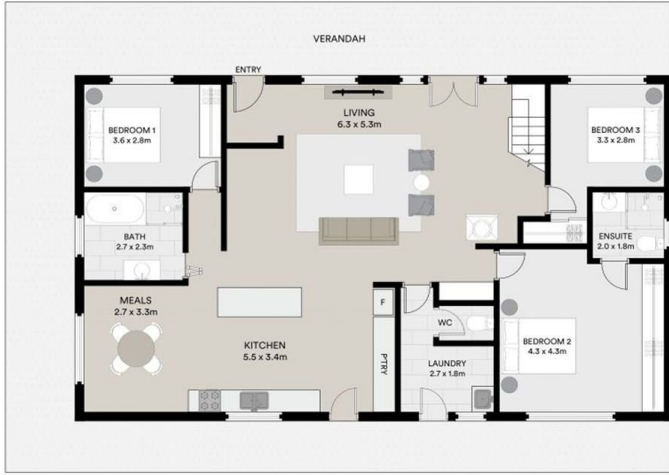
Price : \$1,479,000 - \$1,579,000
Land Size : 49 Acres
View : <https://www.ypa.com.au/8146876>



Jodi Nash
0419 342 120

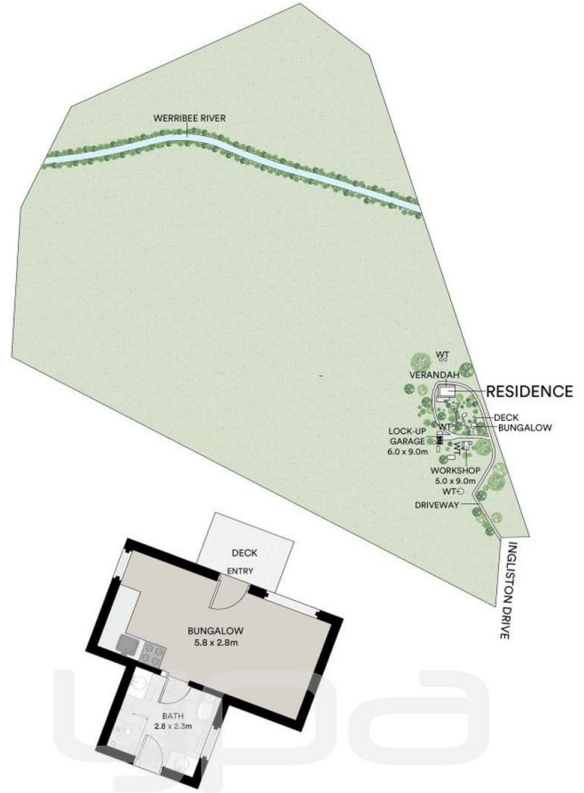


FIRST FLOOR



GROUND FLOOR

INTERNAL AREA : 231 M²
 OUT-BUILDING : 22M²
 EXTERNAL AREA : 202,161 M²
 LAND AREA : 50 Ac



All information contained in this document is from sources we believe to be accurate, however we cannot guarantee its accuracy. Interested persons should make and rely on their own enquiries in relation to measurements, dimensions, layout, furniture and descriptions.