



## 13 Lombard Road Werribee VIC

3  2  1 

A beautifully designed home nestled within the tranquil King's Leigh Estate - The perfect blend of peaceful surroundings and convenient urban connections. With easy access to the Princes Freeway and only 30km from Melbourne's CBD, this location offers a seamless lifestyle for commuters and families alike.

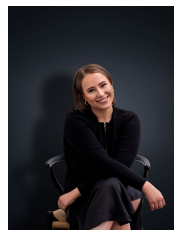
**Price** : \$480 pw  
**View** : <https://www.ypa.com.au/8146898>

### Why You'll Love This Home:

? Thoughtful Layout: This home features three well-sized bedrooms, including a master with a walk-in robe and ensuite, while the remaining bedrooms come with double built-in robes.

? Flexible Spaces: Enjoy the added versatility of a dedicated study nook, perfect for working from home or study sessions.

? Open-Plan Living: The heart of the home is the open-plan



**Ali Dowling**  
0450 778 972