



3 Stableford Chase Harkness VIC

4 2 3

Situated in a quiet pocket of the ever-popular Sovereign Gardens estate, this stunning original home provides something for everyone. Within close proximity to Schools of all levels including Saint Catherine of Sienna Primary School and Saint Francis College, parks, walking tracks and only a short drive to Woodgrove Shopping Centre a location like this is hard to come by.

Before walking through the front door, the property's grandeur is on display with a huge 18.5m (approx.) frontage that simply draws your attention. Complimented by curated gardens and a classic façade that makes you feel at home.

Walking through the front door, you will immediately notice the larger hallway providing space for everyone and bulkhead with feature led downlights creating a sense of

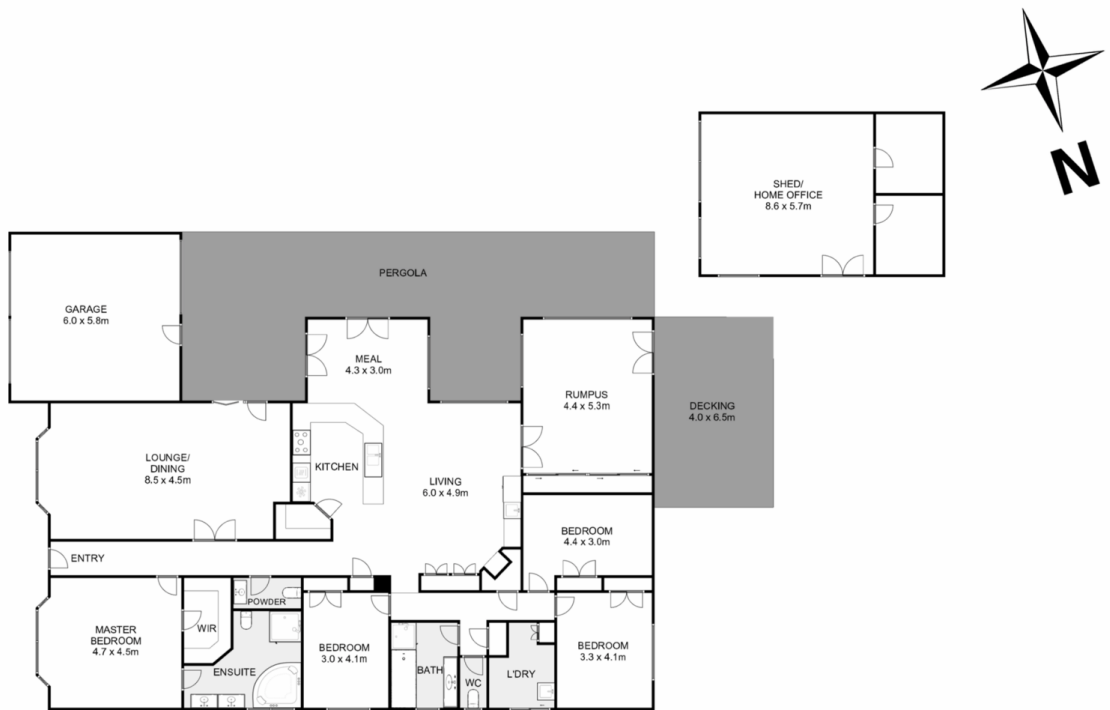
Price : \$769,000 - \$799,000
Land Size : 1003 sqm
View : <https://www.ypa.com.au/8147045>



Shane Spiteri
0488 980 115



Ricky Frew
0402 007 100



3 Stableford Chase, Harkness

ypa

Whilst every attempt has been made to ensure the accuracy of the floor plan contained here, measurements of doors, windows, rooms and any other items are approximate and no responsibility is taken for any error, omission, or mis-statement. This plan is for illustrative purposes only and should be used as such by any prospective purchaser. The services, systems and appliances shown have not been tested and no guarantee as to their operability or efficiency can be given.

