



106 Marriott Boulevard Weir Views VIC

4 2 2

Nestled within the master-planned Toolern Waters Estate with stunning views of the Werribee River, 106 Marriott Boulevard, Weir Views, offers a luxurious near-new 4-bedroom family home designed for comfort and style. This home features multiple living areas, inviting outdoor spaces, and a lifestyle of convenience.

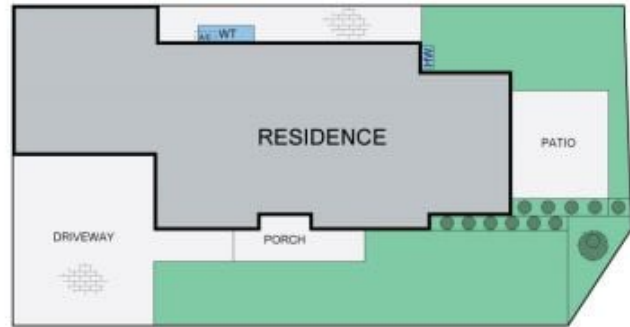
Step inside to a striking entryway, complemented by elegant timber-look flooring that flows seamlessly throughout. The versatile layout offers a range of living spaces, including a separate lounge perfect for a home theatre, a combined open-plan living and dining area for everyday enjoyment, and an upstairs living space with its own balcony, offering breathtaking sunrises over the reservoir. In warmer months, the expansive rear yard with a paved patio is ideal for alfresco dining, while kids and pets have plenty of room to play.

Price : \$550.00 Per Week

View : <https://www.ypa.com.au/8148341>



Victoria Galea
0401 609 553



Disclaimer: Please note plans are indicative only and not drawn to exact scale. All dimensions are approximate. Potential buyers should satisfy themselves of any pertinent matters