



13 Dotterel Court Werribee VIC

4 2 2

The epitome of family living! Embodying style, space, and convenience. Situated on a large allotment, this home is a dream come true for any family seeking the perfect blend of comfort and location.

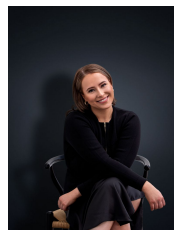
Nestled in a peaceful court location, this quality-built home has recently undergone a stunning renovation, ensuring a modern and stylish living experience.

Walking distance to Pacific Werribee, reputable schools, parklands, AquaPulse, and the public transport network, you'll find yourself at the heart of all the action.

Property Features:

? Spacious layout with four generous bedrooms (all fitted with built in robes)

Price : \$470 pw
View : <https://www.ypa.com.au/8151940>



Ali Dowling
0450 778 972

13 Dotterel Court, Werribee



Disclaimer : Whilst every precaution is taken to ensure information provided regarding this property is highly accurate, the measurements are for guidance only and are not to be used for any other purpose. The agency and creators of this illustration deny responsibility for any omissions or errors contained herein, or for practices carried out with further use of these dimensions. Dimensions are taken from the structural walls in each respective room and will be taken on the longest dimension to maintain uniformity across plans.