

51 Adelong Way Bacchus Marsh VIC

3 2 2

Ideally positioned within a quiet neighbourhood, this townhouse caters to the needs of those seeking a home that is ready to move in and enjoy immediately, or investors alike.

Step inside and discover a thoughtfully designed layout that effortlessly blends functionality and style.

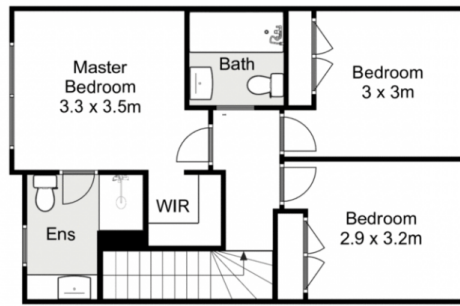
Comprising of three spacious bedrooms upstairs, the master features a walk-in robe and ensuite with an oversized shower, while the remaining two bedrooms equipped with upgraded built in robes, providing exceptional utilization of space.

The ground level consists of a large formal lounge room upon entry, drenched in natural sunlight from the north facing windows and flows through seamlessly to the heart of the home.

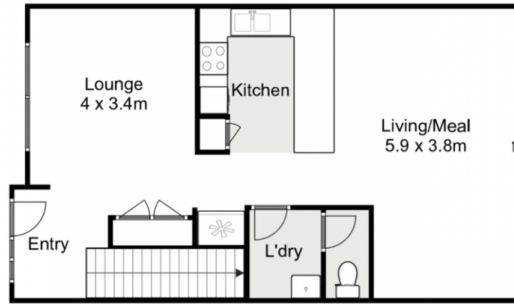
The well-appointed kitchen showcases quality SMEG stainless steel appliances, elegant stone benchtops, and a

Price : \$499,900 - \$549,000

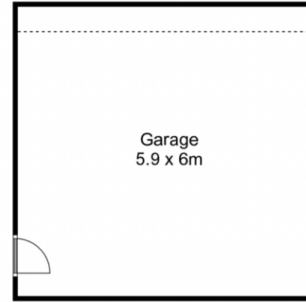
View : <https://www.ypa.com.au/8152810>



First Floor



Ground Floor



51 Adelong Way, Bacchus Marsh

ypa

Whilst every attempt has been made to ensure the accuracy of the floor plan contained here, measurements of doors, windows, rooms and any other items are approximate and no responsibility is taken for any error, omission, or mis-statement. This plan is for illustrative purposes only and should be used as such by any prospective purchaser. The services, systems and appliances shown have not been tested and no guarantee as to their operability or efficiency can be given.

