



## 13 Wanganui Court Taylors Lakes VIC

3 1 2

Sitting on an impressive 762m<sup>2</sup>(approx..) block of land situated in the heart of Taylors Lake. With effortless access to the bustling Keilor Downs Shopping Centre and just a five-minute stroll to some of the region's top schools including St. Mary MacKillop Primary School, Keilor Views Primary School, and Keilor Downs Secondary College this property is ideal for families and investors alike.

The L-shaped living area upon entry is large and provides ample space for the family and also features either a formal dining or study space. This area flows seamlessly into the kitchen which features plenty of bench and cupboard space, 600mm wall oven, gas cooktop and also a single door pantry. The kitchen area overlooks the open plan meals/living area.

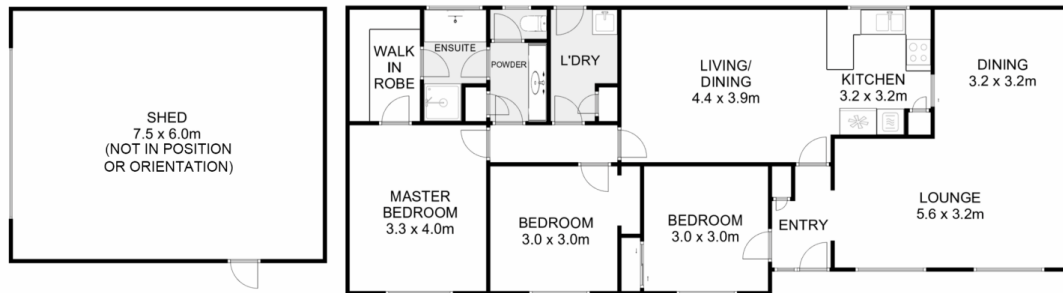
**Price** : \$699,000 - \$769,000  
**Land Size** : 762 sqm  
**View** : <https://www.ypa.com.au/8153685>



**Ryan Anders**  
0434 900 300



**Britteny Cooke**  
0426 211 338



## 13 Wanganui Court, Taylors Lakes

Ypa

Whilst every attempt has been made to ensure the accuracy of the floor plan contained here, measurements of doors, windows, rooms and any other items are approximate and no responsibility is taken for any error, omission, or mis-statement. This plan is for illustrative purposes only and should be used as such by any prospective purchaser. The services, systems and appliances shown have not been tested and no guarantee as to their operability or efficiency can be given.

