



## 2 Alabaster Avenue Cobblebank VIC

3 2 2

Situated in the heart of Cobblebank and in close proximity to Strathtulloh Primary School, Cobblebank Train Station, Cobblebank Athletics Track, Cobblebank Village and the future Melton Hospital this great home is perfect for any savvy buyer looking for their first home, investment or downsize.

Upon entry to this property you are greeted by a bright and airy feel from the neutral colour palette, and modern finishes. At the front of this great floorplan, you are met with the master bedroom complete with walk in robe and bright ensuite, the remaining two bedrooms all have built in robes and are serviced by a stunning modern central bathroom.

Moving through the home you are met with the modern kitchen featuring ample storage space, stone benchtops, dishwasher and stainless-steel appliances, which overlooks

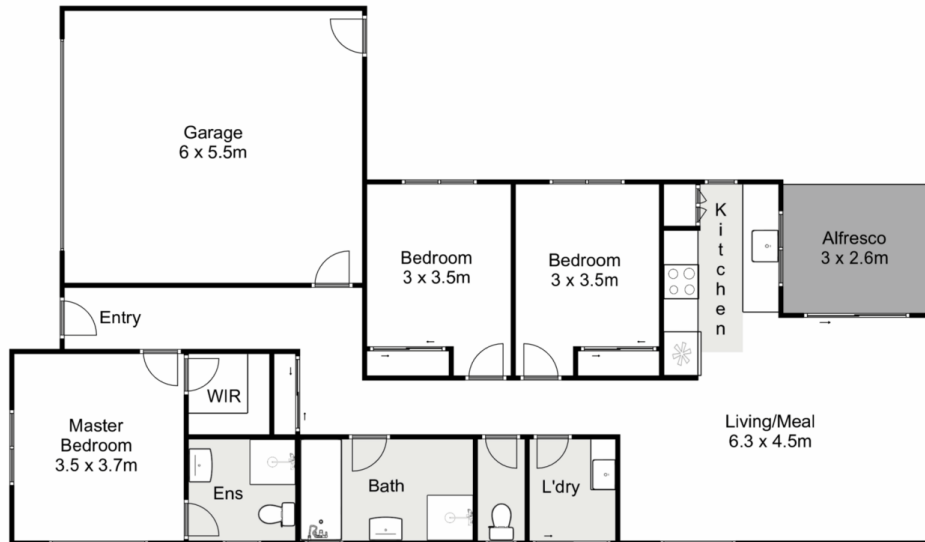
**Price** : \$579,000 - \$619,000  
**Land Size** : 468 sqm  
**View** : <https://www.ypa.com.au/8153976>



**Monty Tyagi**  
0435 896 907



**Junior MuBashar**  
0450 644 606



## 2 Alabaster Avenue, Cobblebank

YPA

Whilst every attempt has been made to ensure the accuracy of the floor plan contained here, measurements of doors, windows, rooms and any other items are approximate and no responsibility is taken for any error, omission, or mis-statement. This plan is for illustrative purposes only and should be used as such by any prospective purchaser. The services, systems and appliances shown have not been tested and no guarantee as to their operability or efficiency can be given.

