



## 9 Carly Terrace Werribee VIC

3 2 2

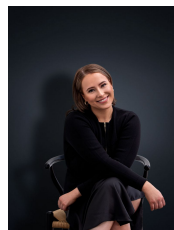
Oozing character and charm! Showcasing lovely park frontage, whilst conveniently located within close proximity to the new Werribee overpass - Providing easy access to M1 freeway / Werribee's CBD.

**Price** : \$450 pw

**View** : <https://www.ypa.com.au/8155245>

### Property Features:

- ? Expansive open plan living (upon entry), flooded with plenty of natural light
- ? Boasting three generous sized bedrooms (all located upstairs) - Master with large walk-in robe, lavish en suite & direct access to gorgeous balcony
- ? Central main bathroom (upstairs) & downstairs powder room
- ? Impressive Tasmanian oak timber kitchen, inclusive of stainless-steel appliances - Gas cooktop, dishwasher & ample cupboard/bench space



**Ali Dowling**  
0450 778 972