

19 Giofches Crescent Tarneit VIC

4 2 2

In a beautiful court location overlooking extremely well-maintained parklands this stunning family home is the ideal setting for many. With Werribee River walking tracks only minutes away this is the ideal location for anyone looking for a peaceful lifestyle within a central pocket. Within walking distance, you also have Bethany Catholic Primary School, Westgrove Primary School, Bus Stops, Local shops & Tarneit West Shopping Centre. Also within close proximity is Pacific Werribee (Approx. 2.9km). The home presents in picture-perfect condition and provides;

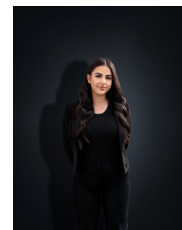
- ? Formal living room upon entry
- ? Four generous sized bedrooms
- ? Master bedrooms with walk in robe and ensuite, remaining three with built in robes
- ? Central renovated bathroom with separate toilet
- ? Open plan kitchen/meals area

Price : \$840,000 - \$899,000

View : <https://www.ypa.com.au/8155827>



James Christou
0450 733 302



Stefanie Zahra
0406871722

19 Giofches Crescent, TARNEIT



Whilst every attempt has been made to ensure the accuracy of the floor plan contained here, measurements of doors, windows, rooms and any other items are approximate and no responsibility is taken for any error, omission, or mis-statement. This plan is for illustrative purposes only and should be used as such by any prospective purchaser. The services, systems and appliances shown have not been tested and no guarantee as to their operability or efficiency can be given.