



## 1 Supple Street Werribee VIC

4  2  2 

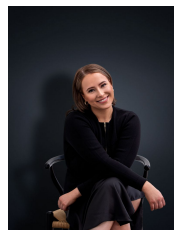
This stylish, light-filled home is perfect for anyone seeking a low maintenance lifestyle. Quality education for every age is within easy reach, only a short stroll to Riverwalk Primary School (P-6) and Aspire Early Learning & Kindergarten. Commuting to Melbourne CBD and/or Geelong is easy, with direct access to the M1 Princes Freeway, or alternatively, utilising the public transport network, with the Werribee Train Station being 8 minutes from home.

### Property Features:

- Generous four bedrooms, master tailored with large built-in robe & en suite
- Remaining bedrooms fitted with double built in robes, serviced by a main central bathroom & separate toilet
- Contemporary, open-plan kitchen and meals zone, stainless steel appliances, dishwasher & Caesar stone bench tops
- Family living/lounge via kitchen, overlooking low

**Price** : \$550 pw

**View** : <https://www.ypa.com.au/8161145>



**Ali Dowling**  
0450 778 972