



34 Dorothea Crescent Dromana VIC

2 2 2

Perched in a highly sought-after pocket of Dromana Hill, this charming home invites you to embrace coastal living with fantastic views of Port Phillip Bay. Light-filled and welcoming, the home's original character is accentuated by exposed wooden beams that lend warmth and personality to the living spaces, while an upstairs balcony offers the perfect spot to take in the sweeping bay views.

The spacious layout provides ample opportunity to enhance the home further. Whether you're looking to update or simply enjoy it as is, the large backyard presents the perfect setting for outdoor entertaining or even an extension to create additional living space. North-facing and with plenty of natural light, this home offers both comfort and potential in equal measure.

Price : \$895,000 - \$980,000
Land Size : 535 sqm
View : <https://www.ypa.com.au/8162431>

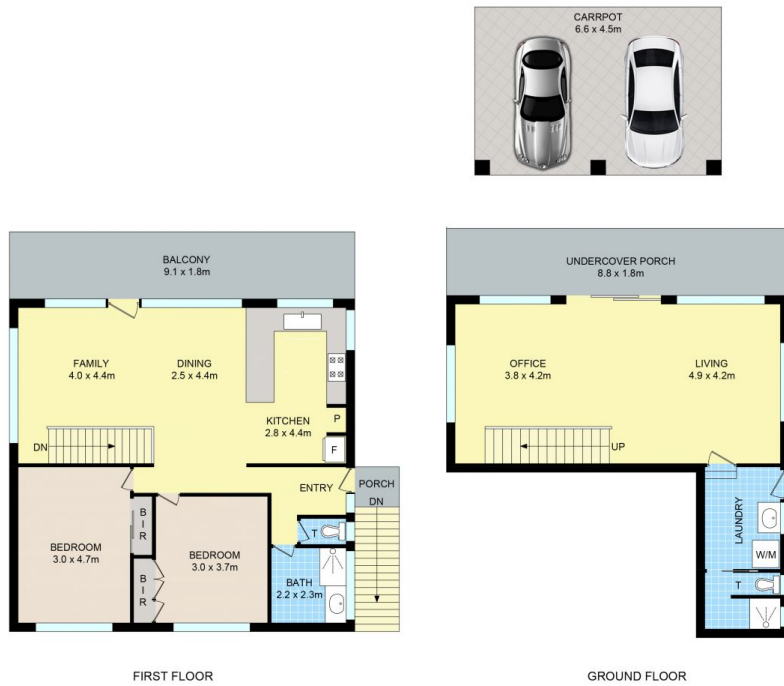


Chris Fahl
0404 668 818



Pietra Vieira
0452 569 994

Located close to the vibrant heart of Dromana Village,



34 Dorothea Cres, Dromana

Disclaimer: Floor plan is for marketing purposes and is to be used as a guide only. Measurements are approximate and for illustrative purposes. Interested parties should make and rely on their own enquiries or refer to contract drawings for more accurate information.

