



## 14 Wintersun Drive ALBANVALE VIC

4 1 2

Welcome to this stunning solid brick veneer home, set on a generous 594m<sup>2</sup> block in the highly sought-after suburb of Albanvale. This property boasts two driveways, offering ample parking space for multiple vehicles.

Step inside to a spacious living area that flows seamlessly into the formal dining room and a modern kitchen, complete with stainless steel appliances.

With four generously sized bedrooms, all featuring built-in and walk-in wardrobes, there's plenty of room for the whole family. The central bathroom is large and well-appointed, while the massive master bedroom offers exciting potential for renovation into an ensuite, giving you the opportunity to create your dream space.

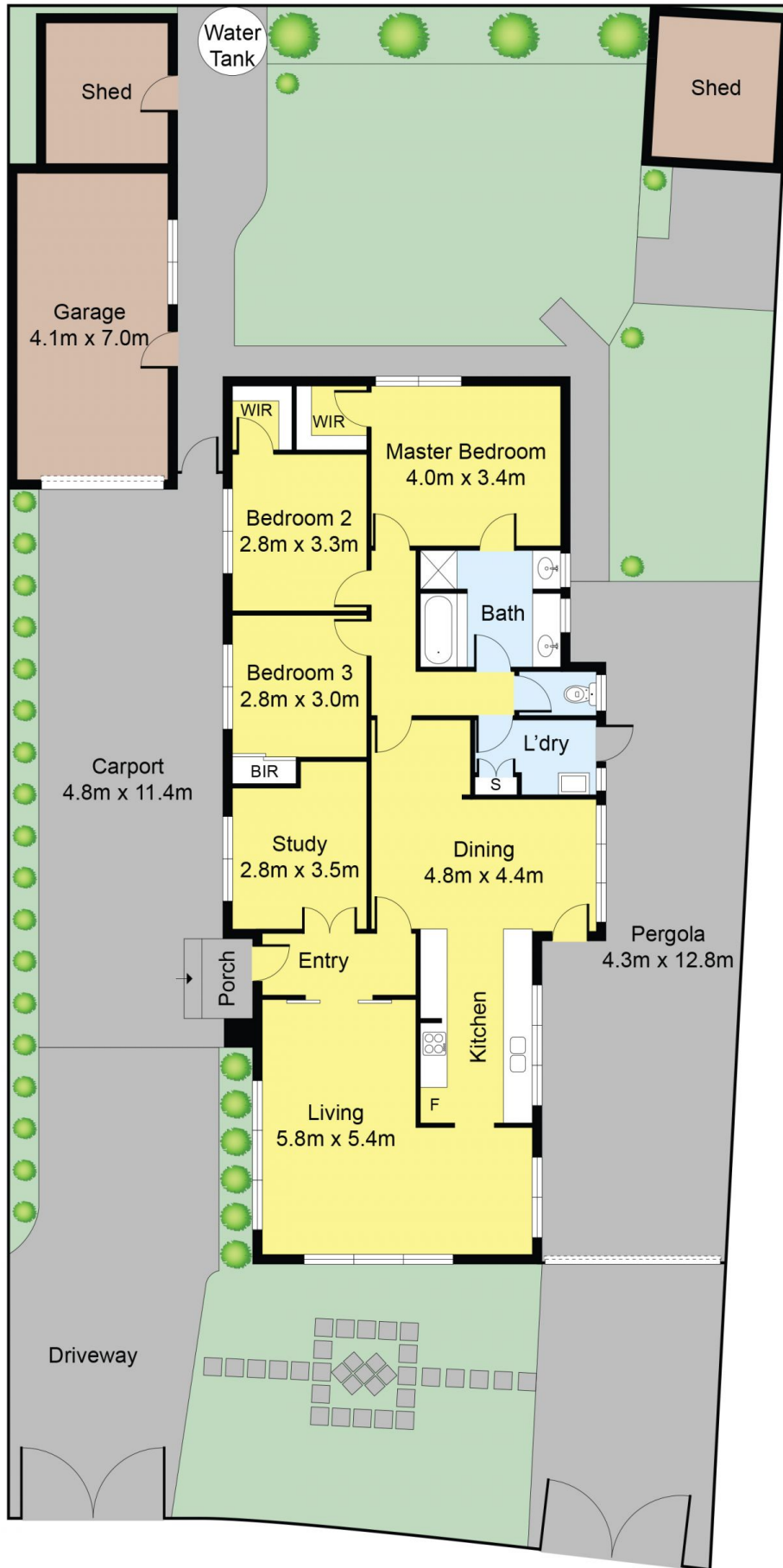
Outside, you'll find a well-maintained garden and a pergola,

**Price** : Private Sale | \$670,000 - \$700,000

**View** : <https://www.ypa.com.au/8162815>



**Andy Nguyen**  
0426821593



Disclaimer: Whilst we believe the contents of this document to be accurate, we suggest the prospective purchasers make any necessary enquiries to satisfy themselves. All measurements are approximate. We do not accept responsibility for any errors or omissions.

# 14 Wintersun Drive, Albanvale

