



11 Rain Lover Drive Kurunjang VIC

3 1 3

Presenting an enticing fusion of captivating amenities and a Hampton inspired aesthetic, this residence boasts spacious proportions that create an exceptional family haven on a 595m²(approx.) allotment. Park facing and with beautiful landscaping, a unique façade and immense attention to detail, this property offers a homely ambience along with the plenty of upgrades and utility, making it stand out from the rest.

Situated in a beautiful established area in the heart of Kurunjang within close distance to schools, parks, freeway access and shops, this family friendly area is ideal for first home buyers, investors or families alike.

Upon entrance you are greeted with the first bedroom, alongside a decent sized master bedroom which flows into the two-way ensuite/central bathroom. Continuing down the

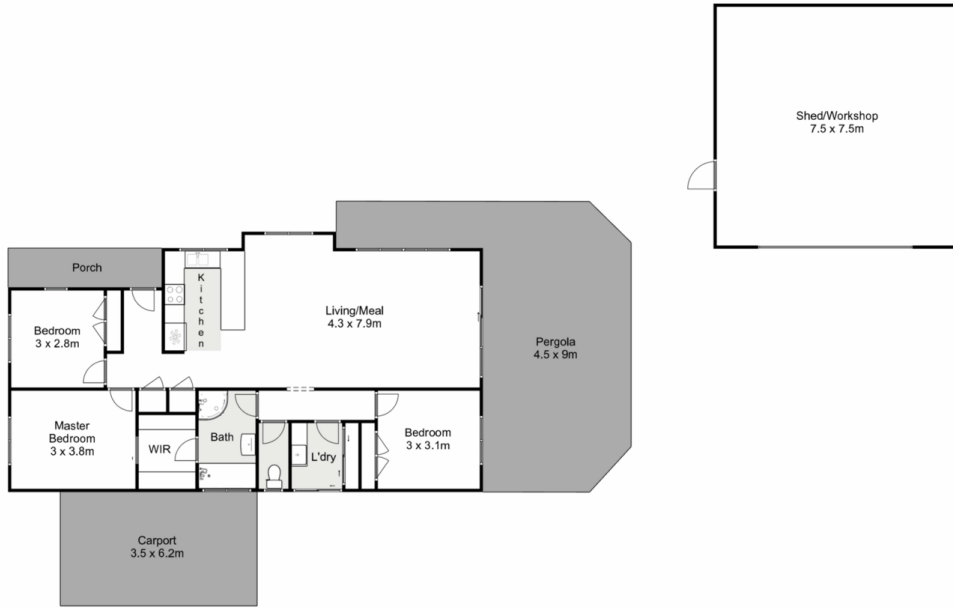
Price : \$529,000 - \$569,000
Land Size : 602 sqm
View : <https://www.ypa.com.au/8163056>



Shane Spiteri
0488 980 115



Junior MuBashar
0450 644 606



11 Rain Lover Drive, Kurunjang

YPA

Whilst every attempt has been made to ensure the accuracy of the floor plan contained here, measurements of doors, windows, rooms and any other items are approximate and no responsibility is taken for any error, omission, or mis-statement. This plan is for illustrative purposes only and should be used as such by any prospective purchaser. The services, systems and appliances shown have not been tested and no guarantee as to their operability or efficiency can be given.

