

**1 Malleefowl Boulevard Beveridge VIC**

3  2  2 

Why go through the stress of building when you can move straight into this beautifully finished, newly built home? Nestled on a prime corner block and set across from a serene family park, this home offers the perfect blend of modern comfort and a relaxed lifestyle.

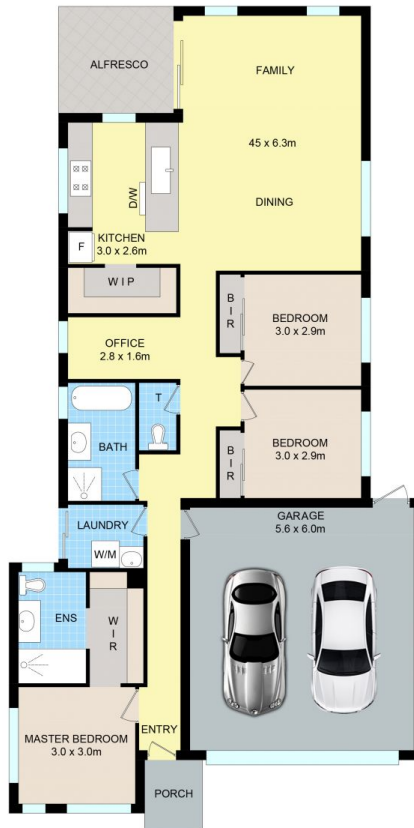
**Price** : Private Sale | \$590,000 - \$630,000  
**View** : <https://www.ypa.com.au/8163286>

#### Lifestyle and Location:

Surrounded by green spaces, this home is ideal for families, pet owners, or anyone who enjoys outdoor living. The sought-after Mandalay Golf Course is just around the corner, providing access to a café, gym, pool, and other leisure facilities. Nearby, you'll also find a library, childcare centres, and Beveridge Primary School, making daily life effortless. Plus, with the M80 freeway just minutes away, you'll enjoy a straightforward commute to Melbourne's CBD, while Wallan's shopping precinct - with ALDI, Coles, and Woolworths - is just a short drive away.



**Luke Albioli**  
0403 700 003



## 1 Malleefowl Blvd, Beveridge

Disclaimer: Floor plan is for marketing purposes and is to be used as a guide only. Measurements are approximate and for illustrative purposes. Interested parties should make and rely on their own enquiries or refer to contract drawings for more accurate information.