



31 Charwood Promenade Werribee VIC

4 2 2

A spacious, modern family home located in the thriving Harpley Estate. Designed with both functionality and style in mind, this home is perfect for a growing family, offering a combination of comfort, space, and modern living.

Price : \$530 pw

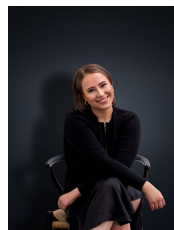
View : <https://www.ypa.com.au/8164550>

Why You'll Love This Home:

? **Spacious Bedrooms:** Four well-sized bedrooms, all fitted with robes. The expansive master bedroom includes a walk-in robe and ensuite for added privacy.

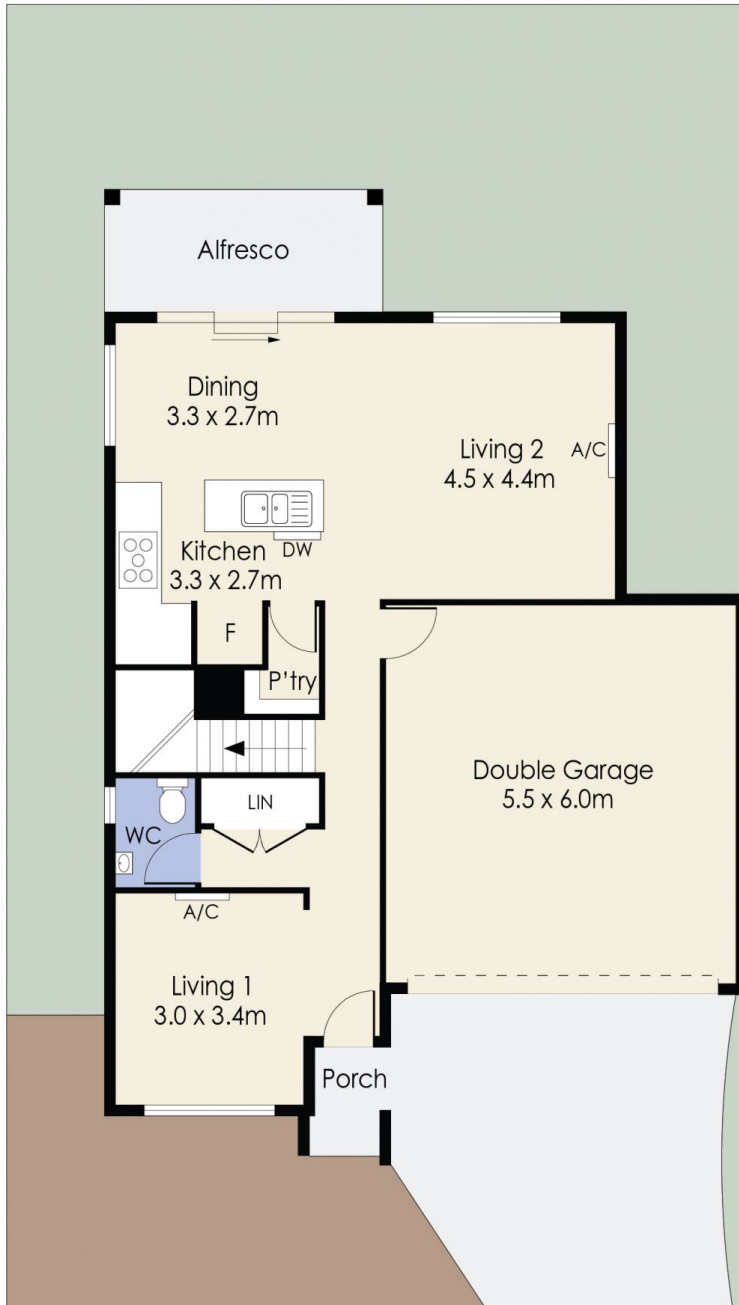
? **Modern Open Plan:** The heart of the home features a contemporary kitchen with stone benchtops, a 900mm oven and cooktop, and a generous pantry. The kitchen seamlessly connects to the meals and family living area, flowing out to the alfresco space-perfect for entertaining.

? **Formal Living:** A separate formal living area upon entry adds extra space for entertaining or relaxing.



Ali Dowling
0450 778 972

31 Charwood Priminade, WERRIBEE



Whilst every attempt has been made to ensure the accuracy of the floor plan contained here, measurements of doors, windows, rooms and any other items are approximate and no responsibility is taken for any error, omission, or mis-statement. This plan is for illustrative purposes only and should be used as such by any prospective purchaser. The services, systems and appliances shown have not been tested and no guarantee as to their operability or efficiency can be given.