

31 Saltaire Drive Strathtulloh VIC

4 2 2

This exciting piece of modern-day architecture is positioned in the highly sought-after Atherstone Estate in Strathtulloh. This amazing area has many amenities right at your doorstep, including brand new shopping complex, Cobblebank Train Station, beautiful parklands, Strathtulloh Primary School, a future hospital and so much more. This stunning brand new Nostra Homes build has been completed to the true definition of luxury with incredible inclusions and upgrades, making this exclusive build a must see due to the detail and quality throughout.

As you step into this charming home, you'll find a spacious master bedroom that boasts a walk-in robe and an ensuite with a large shower and double vanity topped with stone benchtops. The three additional bedrooms are generously sized and each includes built-in robes. They share a modern central bathroom that mirrors the ensuite's

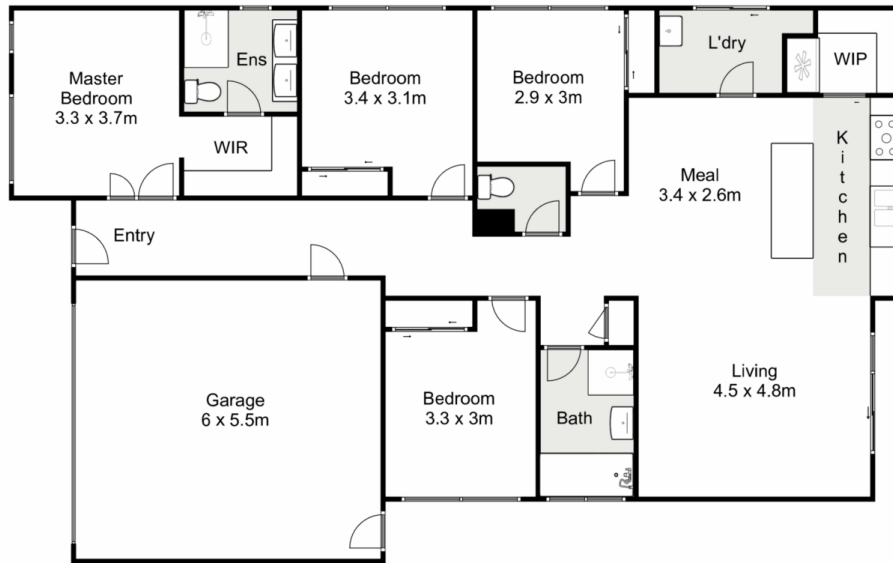
Price : \$579,000 - \$619,000
Land Size : 313 sqm
View : <https://www.ypa.com.au/8164589>



Shane Spiteri
0488 980 115



Kate McGlone
0401 853 244



31 Saltaire Drive, Strathulloh

YPA

Whilst every attempt has been made to ensure the accuracy of the floor plan contained here, measurements of doors, windows, rooms and any other items are approximate and no responsibility is taken for any error, omission, or mis-statement. This plan is for illustrative purposes only and should be used as such by any prospective purchaser. The services, systems and appliances shown have not been tested and no guarantee as to their operability or efficiency can be given.

