



## 13 Bindweed Street Sunbury VIC

3 2 2

Nestled in the prestigious Sunbury Fields Estate, this residence epitomizes modern living in one of Sunbury's most desirable locations. The heart of the home is the sophisticated kitchen, featuring a 900mm gas cooktop, oven, dishwasher, integrated microwave, stone benchtops, and sleek stainless steel appliances. The open-plan living and dining area, set against a neutral colour palette, ensures seamless indoor living.

Boasting a master suite complete with a walk-in robe and luxurious ensuite, and two additional bedrooms with built-in robes, this home offers space and style for the whole family. An exceptional feature is the RARE SIDE ACCESS, perfect for accommodating a caravan or boat, a sought-after addition for those needing extra space.

Additional property features include laundry with external

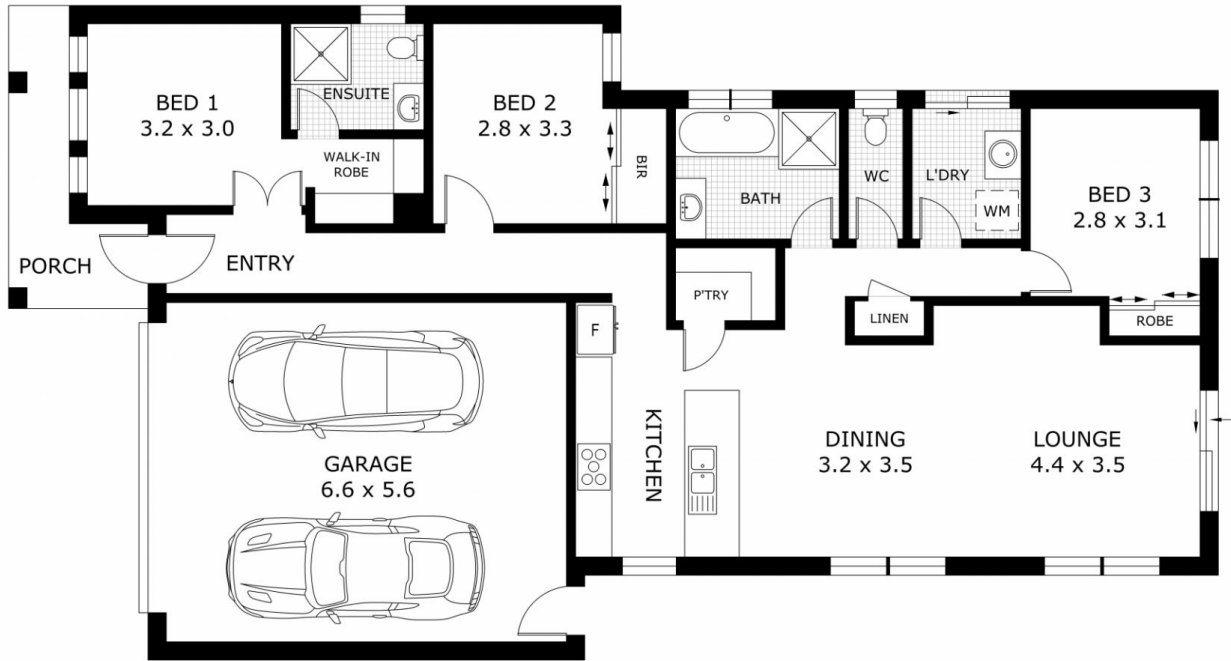
**Price** : \$680,000 - \$730,000  
**Land Size** : 448 sqm  
**View** : <https://www.ypa.com.au/8167758>



**Lisa Totaro**  
0410 144 215



**Cassandra Doria**  
0497 972 028



Disclaimer: All images, views and diagrams are indicative only. Dimensions, areas and landscape are indicative and subject to change without notice. Purchasers should check the plans and specifications included in the terms of the contract of sale carefully prior to signing the contract.