

## 20 Ferris Lane Talbot VIC

4  2  2 

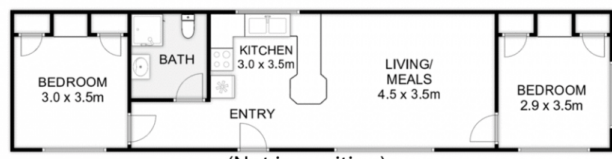
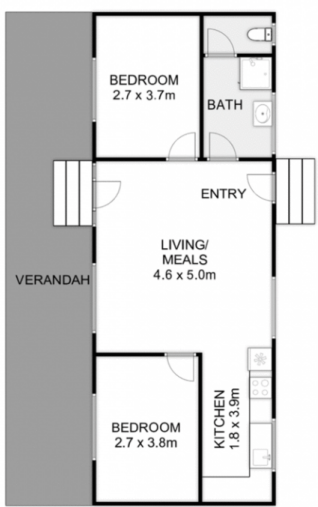
Discover 20 Ferris Lane, Talbot, a unique 20-acre (approx.) property offering the rare combination of dual accommodation, scenic acreage, and the freedom to craft your own vision of country living. Perfectly positioned on expansive land, this property includes two transportable homes and a large shed, ideal for those looking to invest in short-stay accommodations or to establish their dream rural residence.

One of the transportable homes has been fully renovated, providing modern comfort amidst tranquil surrounds. This updated space is ready for immediate enjoyment or could serve as a profitable Airbnb or short-stay rental for guests seeking a rural retreat. Meanwhile, the second transportable home retains its original character, offering a blank canvas with significant potential for renovation or transformation to match the first. This dual-accommodation

**Price** : \$599,000 - \$649,000  
**Land Size** : 20 Acres  
**View** : <https://www.ypa.com.au/8171145>



**Zac Boland**  
0439 442 286



(Not in position)



(Not in position)

# 20 Ferris Lane, Talbot



Whilst every attempt has been made to ensure the accuracy of the floor plan contained here, measurements of doors, windows, rooms and any other items are approximate and no responsibility is taken for any error, omission, or mis-statement. This plan is for illustrative purposes only and should be used as such by any prospective purchaser. The services, systems and appliances shown have not been tested and no guarantee as to their operability or efficiency can be given.

