

### 30 Blomeley Drive Lucas VIC

4 2 2

Step into 30 Blomeley Drive, an immaculate display home located in the sought-after Lucas Grange Estate. Located within the display village, this property offers an exceptional opportunity for investors and owner occupiers alike, with a current leaseback through Highmark Homes until December. Whether you choose to extend the lease for continued returns or make it your family home by year's end, this residence offers unmatched flexibility and quality.

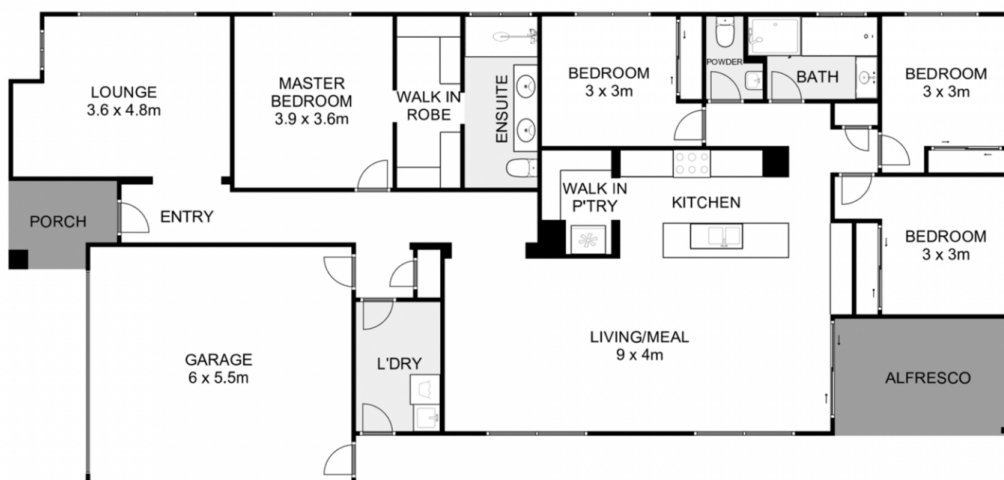
The thoughtfully designed floor plan showcases the very best in modern living, from its impressive 9-foot ceilings to the seamless integration of comfort-focused features like ducted heating and evaporative cooling. Upon entering, you'll be drawn to the inviting and spacious living areas that create an ideal backdrop for relaxed family living and entertaining.

**Price** : \$749,000 - \$799,000

**View** : <https://www.ypa.com.au/8171546>



**Zac Boland**  
0439 442 286



## 30 Blomeley Drive, Lucas

ypa

Whilst every attempt has been made to ensure the accuracy of the floor plan contained here, measurements of doors, windows, rooms and any other items are approximate and no responsibility is taken for any error, omission, or mis-statement. This plan is for illustrative purposes only and should be used as such by any prospective purchaser. The services, systems and appliances shown have not been tested and no guarantee as to their operability or efficiency can be given.

