



5 Preece Lane Aintree VIC

4 2 2

Positioned in a prestigious location on a block of 727m² approx stands this majestic family domain and will be at the top of your Christmas list! Behind an appealing facade, this JG KING X-Display home hits all the high notes for you and your growing family! Built to last a lifetime there is something for a family of all ages to enjoy, you will fall in love with the space this home offers, with 38 squares approx. under the roof line, enjoy three living zones and an incredible outdoor space for entertaining all year round.

Features Include:

? Master bedroom showcasing a private balcony, walk-in wardrobe and ensuite with double vanity and quality fittings

? An additional three spacious bedrooms with built-in wardrobes (One with walk-in wardrobe)

? Front formal lounge

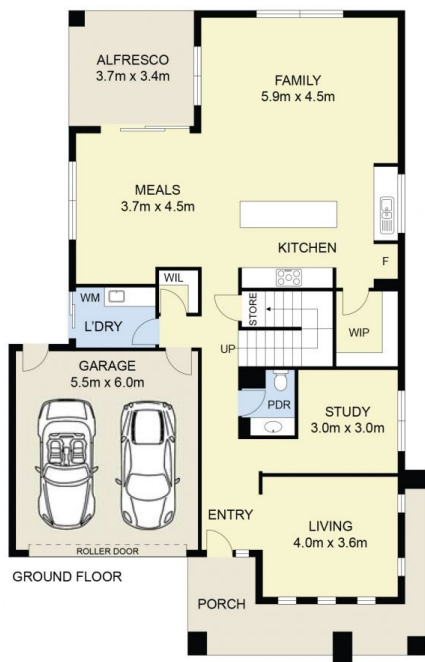
Price : PRIVATE SALE | \$1,180,000 - \$1,298,000
Land Size : 727 sqm
View : <https://www.ypa.com.au/8174407>



Andrew Migliorisi
0432 526 844



Stephen Azzopardi
0402 012 554



5 Preece Lane, Aintree



DISCLAIMER : ALL DIMENSIONS ARE AN APPROXIMATION ONLY AND NO GUARANTEE IS GIVEN WITH RESPECT TO ACCURACY.