



106 Lollipop Crescent Sunbury VIC

3  2  2 

Welcome to this beautifully crafted home in the vibrant Kingsfield Estate, where comfort meets modern elegance. Designed with a neutral colour palette and abundant natural light, this home radiates a warm, inviting atmosphere from the moment you step inside.

The heart of the home is its open-plan kitchen, living, and dining area—a perfect space for family gatherings and entertaining. The kitchen is a chef's delight, complete with a butler's pantry, gas cooktop, oven, dishwasher, and ample cupboard space for all your culinary needs.

The master bedroom is a true retreat, featuring plantation shutters, a spacious walk-in robe, and a private ensuite. Two additional bedrooms with built-in robes provide comfortable accommodation, serviced by a stylish main bathroom with floor-to-ceiling tiles.

Price : \$590,000 - \$640,000

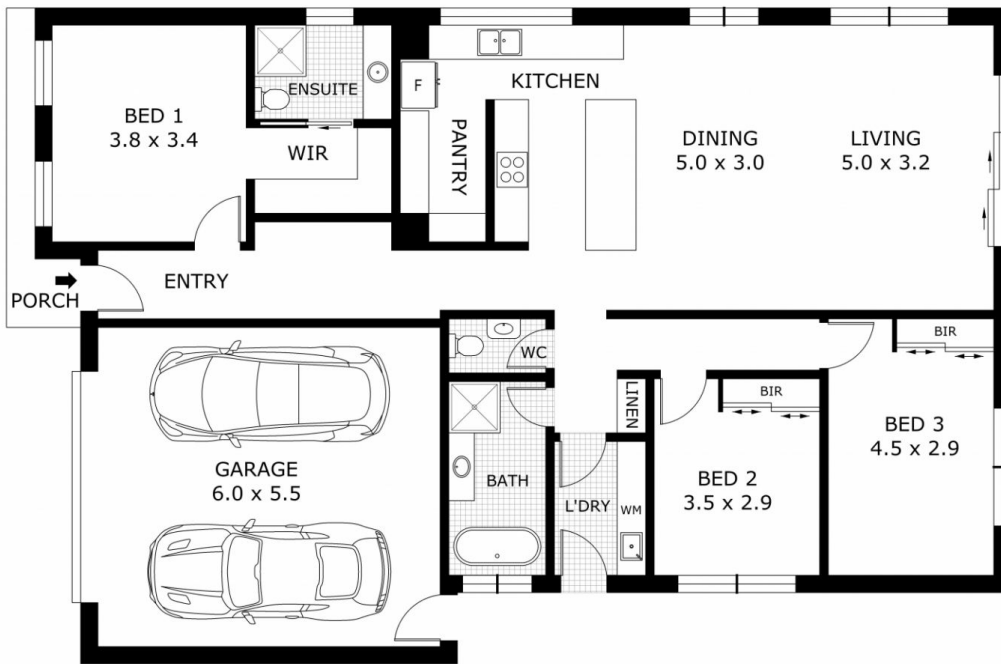
View : <https://www.ypa.com.au/8175428>



Lisa Totaro
0410 144 215



Cassandra Doria
0497 972 028



Disclaimer: All images, views and diagrams are indicative only. Dimensions, areas and landscape are indicative and subject to change without notice. Purchasers should check the plans and specifications included in the terms of the contract of sale carefully prior to signing the contract.