



60 Preston Street Rye VIC

4 3 4

Discover coastal living at its finest in this thoughtfully designed two-level residence, perfectly positioned to capture stunning northern treetop views towards the bay. Uniquely set back approximately 35 meters from the property boundary, this rare offering provides an exceptional street presence and private frontage. Set on a generous 720m² block, this home offers the perfect blend of space, comfort, and contemporary coastal lifestyle.

Key Features

Living Spaces

- ? Expansive open-plan living and dining area bathed in natural light.
- ? Modern updated kitchen with gas cooktop.
- ? Additional family room on lower level.

Price : \$815,000 - \$895,000
Land Size : 720 sqm
View : <https://www.ypa.com.au/8177027>



Jade Springer
0437 410 791

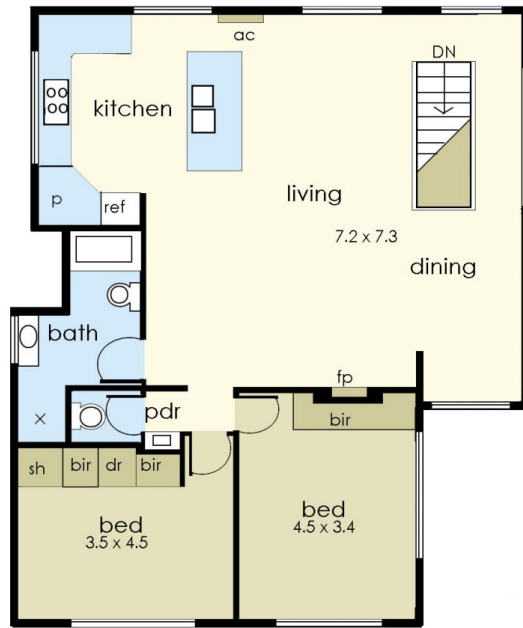
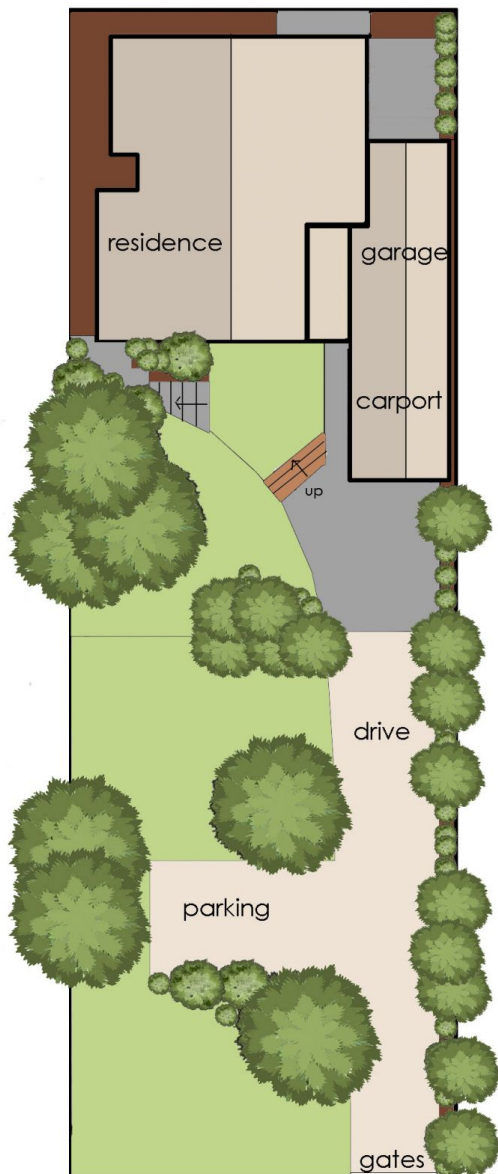


Kelsie Janssen
0417 245 204

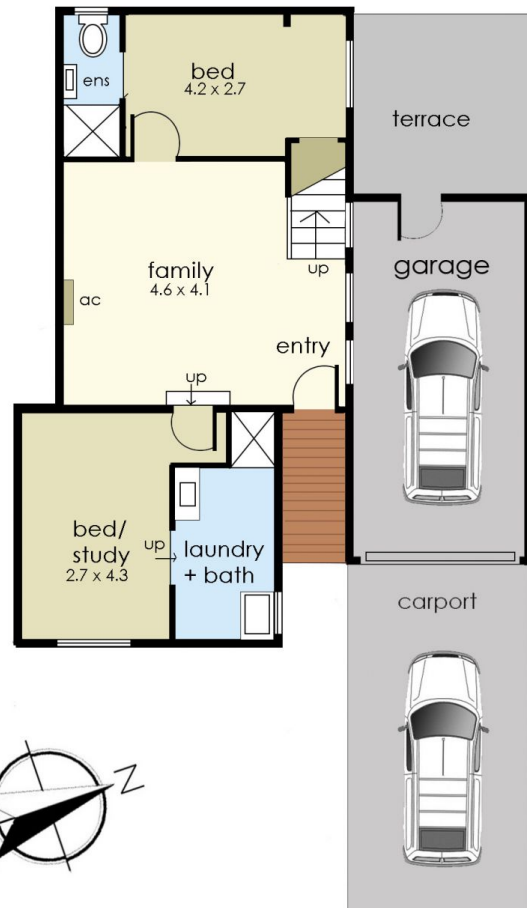
Internal living area
approx: 18 squares

Garage/ Carport area
approx: 5 squares

Total area
approx: 23 squares



FIRST FLOOR



60 Preston Street, Rye

© Produced by DND Floor Plans

This floorplan is for illustration purposes only and no warranty is given to its accuracy. Purchasers are advised to carry out their own investigations.