

32 Westfield Boulevard Westmeadows VIC

4 3 4

Introducing a home like no other?an exceptional masterpiece of quality craftsmanship and opulence. Built with utmost precision and at a cost unimaginable in today's market, 32 Westfield Boulevard is a true architectural marvel. This vast residence showcases the finest in luxury while embracing timeless design.

Overlooking the serene Moonee Ponds Creek Trail with breathtaking city views, this home truly has it all, from captivating scenery to a build quality that's rarely seen today. It's a home that exudes both elegance and endurance, an irreplaceable gem in an idyllic setting.

Set on an impressive 799 sqm and boasting nearly 90 squares under roofline (approx), this one-of-a-kind estate spans four grand levels.

Price : Auction | \$960,000-\$1,010,000
Land Size : 799 sqm
View : <https://www.ypa.com.au/8178705>



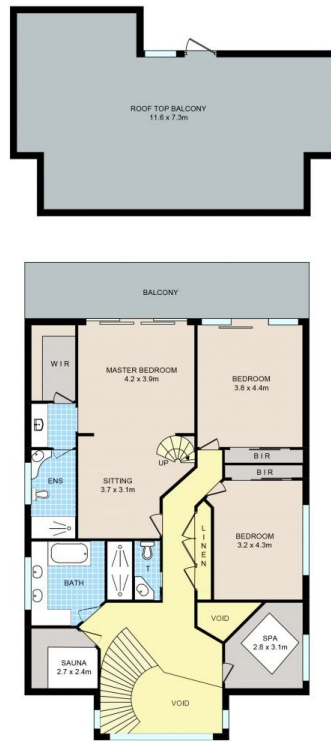
Alexander Sherriff
0438 212 714



Luke Albioli
0403 700 003



GROUND FLOOR



FIRST FLOOR



BELOW GROUND FLOOR

32 Westfield Blvd, Westmeadows

Disclaimer: Floor plan is for marketing purposes and is to be used as a guide only. Measurements are approximate and for illustrative purposes. Interested parties should make and rely on their own enquiries or refer to contract drawings for more accurate information.