



54 Parkin Avenue Caroline Springs VIC

4 2 2

Nestled in the serene and sought-after Cobblestone Estate near the park, this versatile home is crafted to suit a zoned family lifestyle, perfect for large, growing, or extended families. Set on a generous 640m² (approx.) block, this stylish residence combines comfort and potential in equal measure.

Conveniently located close to all that Caroline Springs has to offer, you'll find nearby schools, sporting grounds, the Springlake shopping and dining precinct, CS Square, Lake Caroline, West Waters Hotel, local shops, cafes, restaurants, and easy access to Ballarat Road and the Western Highway. Medical facilities and public transport are also just a short distance away, making this home a must-see!

The home features four well-sized bedrooms with robes,

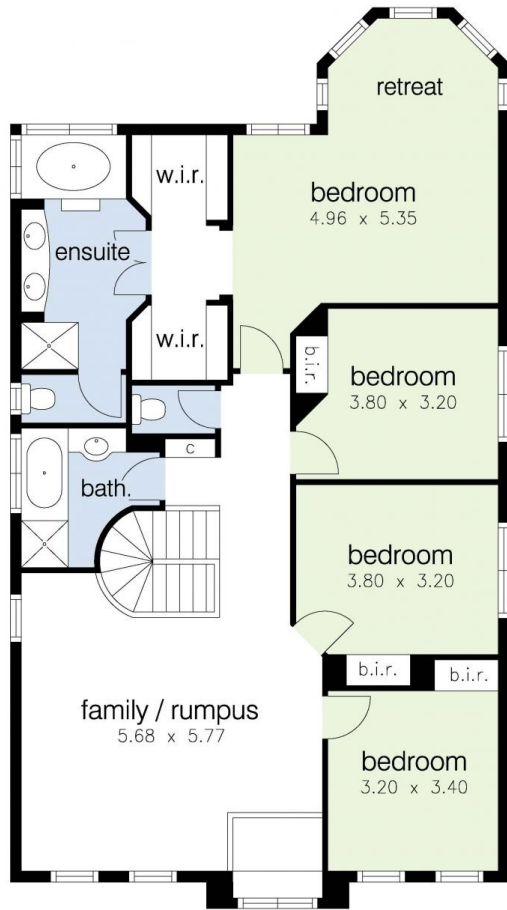
Price : PRIVATE SALE | \$850,000 - \$900,000
Land Size : 640 sqm
View : <https://www.ypa.com.au/8181279>



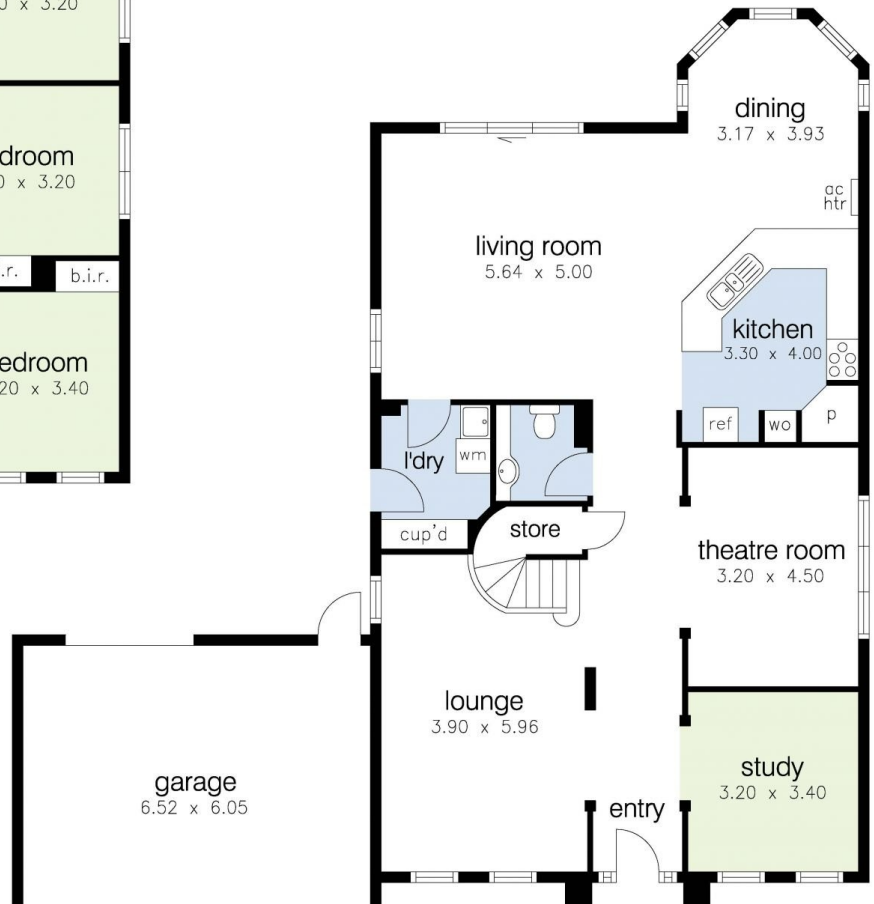
Menka Zdraveska
0404 160 951



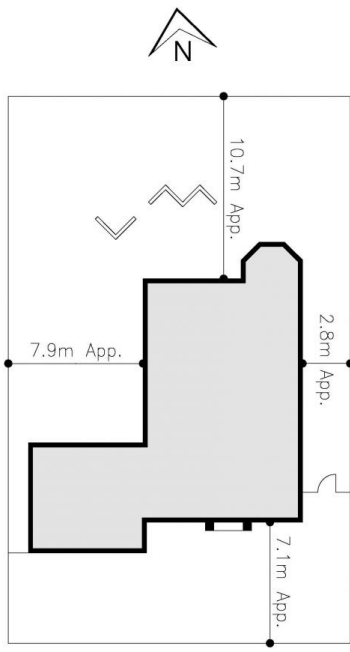
Joel Rawle
0416 165 473



First Floor



Ground Floor



Parkin Avenue

54 Parkin Avenue, Caroline Springs

DISCLAIMER: All stated dimensions are approximate only. Particulars given are for general information only and do not constitute any representation on the part of the vendor or agent/agency.